


RESEARCH ARTICLES

- 679** High Prevalence of Hereditary Cancer Syndromes and Outcomes in Adults with Early-Onset Pancreatic Cancer
Sarah A. Bannon, Maria F. Montiel, Jennifer B. Goldstein, Wenli Dong, Maureen E. Mork, Ester Borrás, Merve Hasanov, Gauri R. Varadhachary, Anirban Maitra, Matthew H. Katz, Lei Feng, Andrew Futreal, David R. Fogelman, Eduardo Vilar, and Florencia McAllister
- 687** ProDiet: A Phase II Randomized Placebo-controlled Trial of Green Tea Catechins and Lycopene in Men at Increased Risk of Prostate Cancer
J. Athene Lane, Vanessa Er, Kerry N.L. Avery, Jeremy Horwood, Marie Cantwell, Gema P. Caro, Alan Crozier, George Davey Smith, Jenny L. Donovan, Liz Down, Freddie C. Hamdy, David Gillatt, Jeff Holly, Rhiannon Macefield, Hilary Moody, David E. Neal, Eleanor Walsh, Richard M. Martin, and Chris Metcalfe
- 697**  Fallopian Tube Lesions in Women at High Risk for Ovarian Cancer: A Multicenter Study
Kala Visvanathan, Patricia Shaw, Betty J. May, Asli Bahadırli-Talbott, Alpana Kaushiva, Harvey Risch, Steven Narod, Tian-Li Wang, Vinita Parkash, Russell Vang, Douglas A. Levine, Robert Soslow, Robert Kurman, and Ie-Ming Shih
- 707** Effects of Supplemental Calcium and Vitamin D on Expression of Toll-Like Receptors and Phospho-IKK α / β in the Normal Rectal Mucosa of Colorectal Adenoma Patients
Rebecca Hodge, Hannah B. Mandle, Stephen Ray, Sonia Tandon, Meaghan Peterson, Abigail Henry, Ferdous A. Jahan, Roberd M. Bostick, John A. Baron, Elizabeth L. Barry, Rami Yacoub, Robin E. Rutherford, March E. Seabrook, and Veronika Fedirko
- 717** Methylation and Expression of Nonclustered Protocadherins Encoding Genes and Risk of Precancerous Gastric Lesions in a High-Risk Population
Si Wu, Yang Zhang, Lian Zhang, Jun-Ling Ma, Tong Zhou, Zhe-Xuan Li, Wei-Dong Liu, Wen-Qing Li, Wei-Cheng You, and Kai-Feng Pan
- 727** Methylation-derived Neutrophil-to-Lymphocyte Ratio and Lung Cancer Risk in Heavy Smokers
Laurie Grieshober, Stefan Graw, Matt J. Barnett, Mark D. Thornquist, Gary E. Goodman, Chu Chen, Devin C. Koestler, Carmen J. Marsit, and Jennifer A. Doherty

 AC icon indicates Author Choice

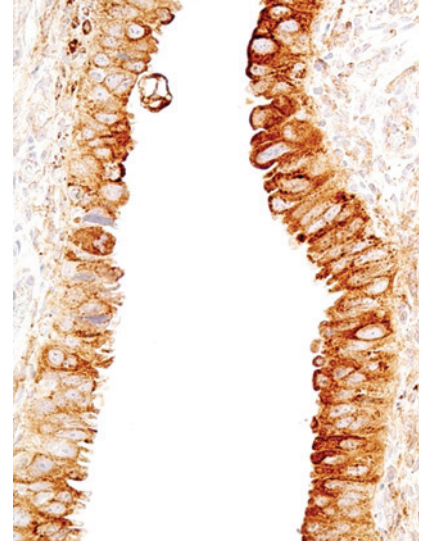
For more information please visit www.aacrjournals.org

Table of Contents



ABOUT THE COVER

Ovarian high-grade serous carcinoma continues to evade early detection and prevention. Little is known about the early molecular events preceding ovarian cancer. Learning more about the origin of putative precancerous lesions such as serous tubal intraepithelial carcinoma (STIC) in the fallopian tube and their potential transition to invasive carcinoma is necessary to prevent the disease. These lesions could be a risk factor for ovarian cancer, a true precursor or an in-situ component of the carcinoma. The cover image shows a representative STIC at 20× magnification stained with the antibody against laminin C1 encoded by *LAMC1* but not in the adjacent normal-appearing epithelium. As pictured, STICs are characterized by a combination of nuclear enlargement, loss of polarity, and nuclear atypia. The multicenter study conducted by Visvanathan et al. (see page 697) explored risk/protective factors associated with STICs and characterized the various lesions present in the fallopian tube of high-risk women.



Cancer Prevention Research

11 (11)

Cancer Prev Res 2018;11:679-734.

Updated version Access the most recent version of this article at:
<http://cancerpreventionresearch.aacrjournals.org/content/11/11>

E-mail alerts [Sign up to receive free email-alerts](#) related to this article or journal.

Reprints and Subscriptions To order reprints of this article or to subscribe to the journal, contact the AACR Publications Department at pubs@aacr.org.

Permissions To request permission to re-use all or part of this article, use this link <http://cancerpreventionresearch.aacrjournals.org/content/11/11>. Click on "Request Permissions" which will take you to the Copyright Clearance Center's (CCC) Rightslink site.