

Research Article

Resveratrol Suppresses Colitis and Colon Cancer
Associated with ColitisXiangli Cui¹, Yu Jin¹, Anne B. Hofseth¹, Edsel Pena², Joshua Habiger², Alexander Chumanovich¹, Deepak Poudyal¹, Mitzi Nagarkatti³, Prakash S. Nagarkatti³, Udai P. Singh³, and Lorne J. Hofseth¹

Abstract

Resveratrol is a naturally occurring polyphenol that exhibits pleiotropic health beneficial effects, including anti-inflammatory, cardio-protective, and cancer-protective activities. It is recognized as one of the more promising natural molecules in the prevention and treatment of chronic inflammatory and autoimmune disorders. Ulcerative colitis is an idiopathic, chronic inflammatory disease of the colon associated with a high colon cancer risk. Here, we used a dextran sulfate sodium (DSS) mouse model of colitis, which resembles human ulcerative colitis pathology. Resveratrol mixed in food ameliorates DSS-induced colitis in mice in a dose-dependent manner. Resveratrol significantly improves inflammation score, downregulates the percentage of neutrophils in the mesenteric lymph nodes and lamina propria, and modulates CD3⁺ T cells that express tumor necrosis factor- α and IFN- γ . Markers of inflammation and inflammatory stress (p53 and p53-phospho-Ser¹⁵) are also downregulated by resveratrol. Because chronic colitis drives colon cancer risk, we carried out experiments to determine the chemopreventive properties of resveratrol. Tumor incidence is reduced from 80% in mice treated with azoxymethane (AOM) + DSS to 20% in mice treated with AOM + DSS + resveratrol (300 ppm). Tumor multiplicity also decreased with resveratrol treatment. AOM + DSS-treated mice had 2.4 ± 0.7 tumors per animal compared with AOM + DSS + 300 ppm resveratrol, which had 0.2 ± 0.13 tumors per animal. The current study indicates that resveratrol is a useful, nontoxic complementary and alternative strategy to abate colitis and potentially colon cancer associated with colitis. *Cancer Prev Res*; 3(4); 549–59. ©2010 AACR.

Introduction

Resveratrol (3,4,5-trihydroxy-*trans*-stilbene) is a naturally occurring compound, often derived from the Japanese (bushy) knotweed, but is also found in the skin of red grapes and is a constituent of red wine. Resveratrol has been shown to extend the life span of yeast and mice (1). In murine experiments, antiaging, anti-inflammatory, anticancer, antineurodegenerative, blood sugar-lowering, chelating, and other beneficial cardiovascular effects of resveratrol have been reported (2–7). Although resveratrol has been studied little in humans, it seems to have cardioprotective effects *ex vivo* (8, 9). At daily doses equivalent

to the amount of resveratrol in >1,000 bottles of red wine, resveratrol seems to be safe (10), but resveratrol undergoes extensive metabolism in humans, which limits the availability of the parent molecule at organs remote from the site of absorption (10). It is therefore particularly appealing when studying gastrointestinal tract diseases.

Resveratrol has been shown to suppress several autoimmune diseases, including experimental encephalomyelitis (11, 12), arthritis (11), myocarditis (13), and diabetes (14). The capability of resveratrol to suppress chronic inflammatory diseases associated with a high cancer risk, such as inflammatory bowel disease (IBD), has only been explored in rats by one other group (15, 16).

IBD consists of two forms, ulcerative colitis (UC) and Crohn's disease, which are dynamic, idiopathic, chronic inflammatory conditions associated with a high colon cancer risk (17). Conventional treatment of colitis can reduce periods of active disease and help to maintain remission, but these treatments often bring marginal results, patients become refractory, and there are side effects. For this reason, many colitis sufferers turn to unconventional treatments in hopes of abating symptoms of active disease and it is estimated that 40% of IBD patients use some form of megavitamin therapy of herbal/dietary supplement (18, 19). We have recently shown that *Ginkgo biloba* (EGb 761) and American ginseng extracts can suppress colitis in mice (20, 21). Because of the strong anti-inflammatory

Authors' Affiliations: Departments of ¹Pharmaceutical and Biomedical Sciences, ²Statistics, and ³Pathology and Microbiology, School of Medicine, University of South Carolina, Columbia, South Carolina

Note: Supplementary data for this article are available at Cancer Prevention Research Online (<http://cancerprevres.aacrjournals.org/>).

Corresponding Authors: Lorne J. Hofseth, Department of Biomedical and Pharmaceutical Sciences, South Carolina College of Pharmacy, 770 Sumter Street, Coker Life Sciences, Room 513C, University of South Carolina, Columbia, SC 29208. Phone: 803-777-6627; Fax: 803-777-8356; E-mail: hofseth@cop.sc.edu or Udai P. Singh, Department of Pathology, Microbiology and Immunology, College of Medicine, University of South Carolina, Columbia, SC 29208. Phone: 803-733-3376; Fax: 803-733-3212; E-mail: usingh@uscmed.sc.edu.

doi: 10.1158/1940-6207.CAPR-09-0117

©2010 American Association for Cancer Research.

properties of resveratrol, we hypothesized that this supplement will also work against colitis. Here, we provide data supporting such studies, indicating that resveratrol administered in the basal diet suppresses dextran sulfate sodium (DSS)-induced colitis and colon cancer associated with colitis in mice.

Materials and Methods

Resveratrol characteristics

We used resveratrol obtained from Sigma Chemical Co. This is 3,4,5-trihydroxy-*trans*-stilbene (*trans*-resveratrol aglycone), which is a purified compound with the molecular formula $C_{14}H_{12}O_3$. The Certificate of Origin indicates it was originally purified and extracted from the bushy knotweed plant and is found to be >99% pure by both gas chromatography and TLC. The absorbance spectrum is consistent with its structure and is $EmM(218\text{ nm}) = 21.5$ (ethanol), $EmM(306\text{ nm}) = 30.0$ (ethanol), and $EmM(320) = 29.1$ (ethanol). The conditions used for gas chromatography were as follows: capillary column: $30\text{ m} \times 0.32\text{ mm ID}$ with $0.25\text{-}\mu\text{m}$ particles; temperature (EC): injector 280, detector 280; flow rate: 25 cm/s He ; column temperature program: 260 to 280EC at $4^\circ/\text{min}$; solvent: Sigma Sil A 10 mg/mL ; volume injected: $1.0\text{ }\mu\text{L}$; retention time: $\sim 5\text{ min}$. The conditions used for TLC were as follows: system: silica gel plates; solvent: 30 parts

n-butanol/20 parts pyridine/20 parts water/6 parts glacial acetic acid; detection: iodine vapor or methanolic sulfuric acid spray; sample dissolved at 50 mg/mL in acetone, spotted from 0.5 to $250\text{ }\mu\text{g}$; $R_f \sim 0.7$. It is a white powder with yellow cast and has a molecular weight of 228.2 g/mol . This product is stable at -20°C for at least 2 y. When added to the basal diet, we stored the diet at 4°C and changed the basal diet every 2 d during experiments. The diet comes from Research Diets, Inc. Resveratrol from Sigma is sent to Research Diets and mixed with a standard AIN-93M diet. Briefly, the diet preparation operator at Research Diets carefully weighs out each ingredient. With microingredients, such as the resveratrol, vitamin mix, and mineral mix, a premix is created to optimize the microingredient particle distribution in the diet. This micro-premix is then mixed with the main ingredients of the diet, and after diet is homogeneously mixed, it is sent for pelleting. The final amount of resveratrol was 75 to 300 ppm. As indicated in Fig. 1, although doses of 75 ppm were inadequate at suppressing colitis, doses of 150 and 300 ppm were successful. We therefore used these doses in subsequent mechanistic experiments. A dose of 150 ppm was used for mechanistic experiments described in Figs. 2 and 3; a dose of 300 ppm was used for mechanistic experiments described in Figs. 4 and 5. Importantly, after the resveratrol is mixed with the basal diet, it maintains its biological activity. The basal diet has a 4-mo expiration date from the

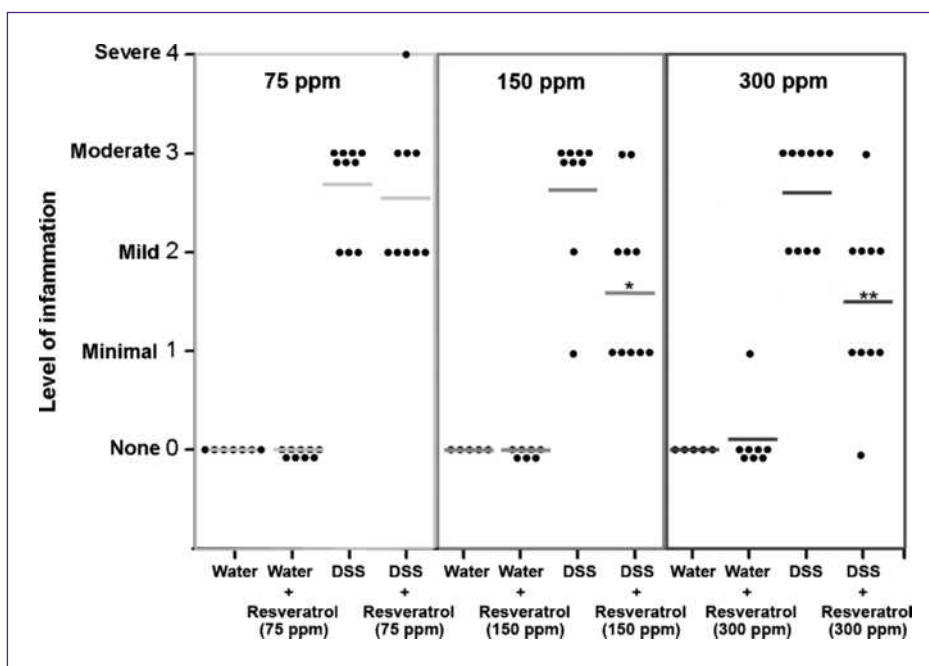
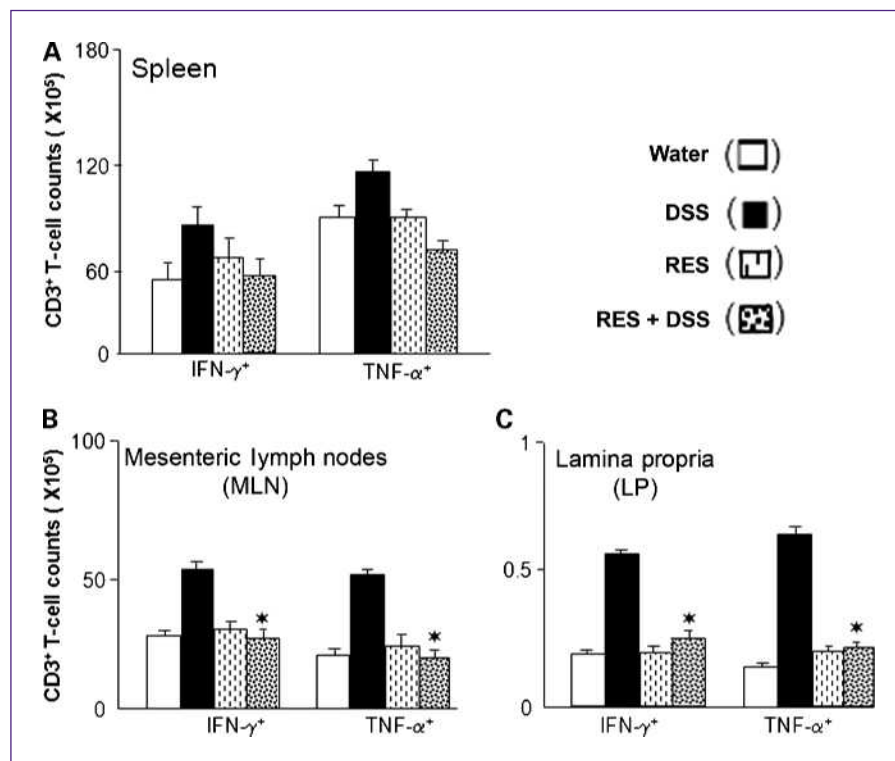


Fig. 1. Resveratrol inhibits colitis in mice exposed to DSS. Mice were treated as described in the text. Results are presented as a dot plot, with the lines representing the mean inflammation score among the group. Each dot represents an individual mouse, and the level of colon inflammation was quantified and graded blindly and independently by two trained pathologists as described in the text. These data are presented in this fashion to reflect three separate studies that were done. Based on findings from other studies in our lab (20, 21), we initially used 75 ppm resveratrol in the basal diet. This dose did not protect mice from DSS-induced colitis, so we initiated experiments with and without 150 ppm and with and without 300 ppm in the basal diet, as indicated in the figure. *, $P < 0.05$, resveratrol (150 ppm) significantly reduced colitis compared with the DSS group alone; **, $P < 0.01$, resveratrol (300 ppm) significantly reduced colitis compared with the DSS group alone.

Fig. 2. Resveratrol mediates T cells expressing IFN- γ and TNF- α after DSS induction. Splenic (A), MLN (B), and LP (C) lymphocytes were isolated from C57BL/6 mice that received water (control, white columns), 100 μ L of resveratrol (RES) with water (white columns with dots) or water containing 1% DSS (black columns), and 150 ppm of resveratrol with DSS (dotted columns) in diets. Changes in number of T cells expressing IFN- γ and TNF- α were determined by flow cytometry. Columns, mean total number of cells; bars, SEM. Data represent the mean of three independent experiments involving five mice per group. For each experiment and group, the lymphocytes were pooled. *, $P < 0.05$, resveratrol (150 ppm) significantly reduced colitis compared with the DSS only group.



time it is produced. We have tested the biological activity in five separate batches, and it maintained its biological activity in that it causes a 2- to 3-fold reduction in mouse colitis at 300 ppm

The dose of resveratrol we used (75-300 ppm) is the human equivalent dose of 58 to 232 mg daily, which is far below that considered safe in humans (up to 5,000 mg; ref. 10). Of note is that recommended dosages for oral dietary supplements range from 2.5 mg to 1 g for humans, and adverse effects of resveratrol have not been reported (10, 22). In addition, of note is that we used the commercially available aglycone formulation of resveratrol, whereas humans often consume resveratrol glucoside formulations. Resveratrol aglycone seems to represent the predominant form of resveratrol in tissues (23). Our calculation of the human equivalent amount of resveratrol consumed by mice uses the body surface area normalization method (24) with the following assumptions: a typical mouse eats 3.5 g diet daily and weighs 22 g; the average adult human weighs 60 kg. More specifically, here, diet contains 75 to 300 ppm resveratrol. A dose of 75 ppm equates to 75 mg/kg of diet. A mouse consumes 3.5 g diet daily. Therefore, 75 mg/1,000 g daily diet \times 3.5 g diet/day = 0.2625 mg resveratrol extract daily. If a mouse weighs on average 22 g, then 0.2625 mg/22 g \times 1,000 g/1 kg = 11.93 mg/kg daily. As discussed by Reagan-Shaw et al. (24), the human equivalent dose (mg/kg) = animal dose (mg/kg) \times (animal K_m /human K_m). As such, human equivalent dose (mg/kg) for mouse = 11.93 mg/kg/(3/37) = 0.967 mg/kg. If an average human adult weighs 60 kg, this equates to

0.967 mg/kg \times 60 kg = 58 mg daily for humans. The 58 mg (for 75 ppm) \times 4 = 232 mg daily for human for 300 ppm. Mice consumed the same amount of diet daily (on average 3.5 g) regardless of it containing resveratrol (data not shown).

Animals

Male and female C57BL/6 mice, 8 to 12 wk of age, weighing 20 to 25 g were obtained from The Jackson Laboratories and are under a breeding protocol at the University of South Carolina. All mice are kept in dedicated animal quarters and provided food [AIN-93M, described previously (20, 21)] and water *ad libitum*. Routine changing of cages, food, and water was done twice weekly by trained personnel. Care and use of animals was overseen by the Animal Resource Facility (ARF) of the University of South Carolina under the direction of our veterinarian. The ARF is fully accredited by the Association for Assessment and Accreditation of Laboratory Animal Care International and is registered with the U.S. Department of Agriculture (56-R-003). The ARF also has an active letter of Assurance of Compliance on file at the NIH.

DSS mouse model of colitis

We have previously described our DSS model of colitis (refs. 20, 21; Supplementary Fig. S1). Briefly, 8- to 12-wk-old C57BL/6 mice received either water *ad libitum* or water containing 1% DSS. Resveratrol was mixed into the AIN-93M diet of indicated groups at 75 to 300 ppm (Research Diets), which is the human equivalent dose of approximately

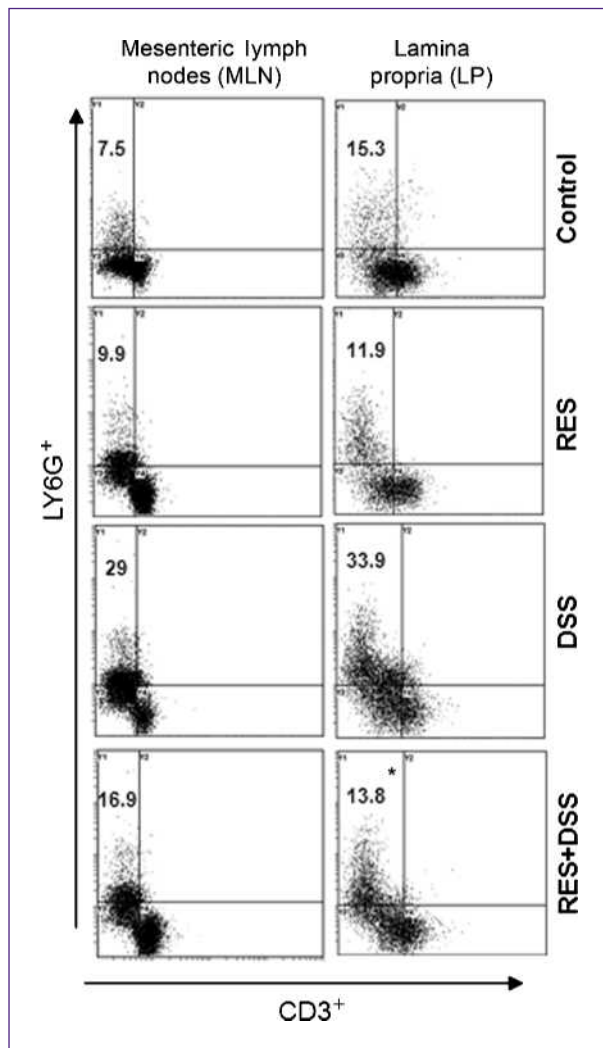


Fig. 3. Resveratrol modulates DSS-induced neutrophils during colitis. MLNs and LP lymphocytes were isolated from C57BL/6 mice that received water, 150 ppm of resveratrol with water or water containing 1% DSS, and 150 ppm of resveratrol with DSS and stained for CD3⁺ T cells and neutrophils. The MLN or LP-derived CD3⁺ lymphocytes were characterized for neutrophil expression (LY6G) by flow cytometry. The numbers in the top left quadrant indicate the total percentage of LY6G⁺ neutrophils. Data are a representative experiment of three independent experiments. Each experiment involved pooled lymphocytes from five mice per groups. *, $P < 0.01$, statistically significant differences between DSS + resveratrol-treated groups compared with the DSS alone group.

58 to 232 mg daily for humans, as described above. Basal diet (\pm resveratrol) was initiated 1 wk before the administration of DSS and continued throughout the experiment. DSS was given over 2.5 cycles (where each cycle in the DSS group consisted of 1% DSS in drinking water for 7 d followed by a 7-d interval with normal drinking water). At the end of the experiment, blood was collected and colon samples were washed with PBS, cut longitudinally, Swiss-rolled, and then formalin fixed and paraffin embedded.

Azoxymethane/DSS-induced colon cancer model

We followed a modified protocol outlined recently by the Neurath group (25). Supplementary Fig. S2 outlines the time line. Briefly, mice were weighed and given a single i.p. injection of azoxymethane (AOM; 10 mg/kg) or vehicle (PBS) on experimental day 1. One week later, animals received either 1% DSS or normal drinking water concurrently with AIN-93M basal diet containing 0 or 300 ppm resveratrol. Chronic colitis and colon cancer were induced with a cyclical DSS treatment, which consisted of 7 d of 1% DSS followed by 14 d of normal water for a total of three cycles. The resveratrol was continued until the end of the experiment on day 70.

On day 70, the mice were weighed and euthanized, and their blood and tissues were harvested. Colons were cut longitudinally and fixed in 10% buffered formalin overnight. The colons were then stained with methylene blue and scored for the number of colonic neoplasms to determine the incidence (number of animals with at least one tumor) and multiplicity (number of tumors per animal) of neoplasms. Tumor area, based on length and width, was also calculated. Following photography, colons were rinsed with ice-cold PBS and processed for histopathology and immunohistochemistry by paraffin embedding.

Quantifying inflammation

Slides were examined in a blind fashion by two individuals separately, as we have described previously (20, 21). Briefly, inflammation was graded by extent (focal, multifocal, diffuse, or extensive areas) and depth/penetration of inflammation [lamina propria (LP), into submucosa, into muscularis propria, into subserosa] and then given a numerical value of 0 to 4, where 0 is none observed and 4 is severe inflammation and/or ulceration/erosion.

Immunohistochemical staining

For immunohistochemical staining, serial sections of mouse colon tissues (processed as described above) were incubated with antibodies against inducible nitric oxide synthase (iNOS; mouse monoclonal clone 5D5-H7; diluted 1:10,000; Research & Diagnostic Antibodies), cyclooxygenase-2 (COX-2; rabbit polyclonal; diluted 1:20,000; Cayman Chemical), tumor necrosis factor- α (TNF- α ; mouse monoclonal, clone P/T2; diluted 1:50,000; Abcam), p53 (mouse monoclonal, clone Pab 122; diluted 1:1,000,000; Exalpha Biologicals, Inc.), or p53-phospho-Ser¹⁵ (mouse monoclonal, anti-phospho-Ser¹⁵, clone 16G8; diluted 1:20,000; Cell Signaling). To ensure even staining and reproducible results, sections were incubated by slow rocking overnight in primary antibodies (4°C) using the Antibody Amplifier (ProHisto, LLC). Following incubation with primary antibody, sections were processed using EnVision+ System-HRP kits (DakoCytomation) according to kit protocols or using a Mouse-on-Mouse kit (Vector Laboratories) if antibodies were mouse monoclonals. The chromogen was 3,3'-diaminobenzidine and sections were counterstained with 1% methyl green. The positive control tissue was colon cancer sections. These

sections were highly positive for iNOS, COX-2, TNF- α , p53, and p53-phospho-Ser¹⁵.

Stained tissues were examined for intensity of staining using a method similar to that previously described (26). Intensity of staining in tumor sections was evaluated independently by blinded investigators. For each tissue section, the percentage of positive cells was scored on a scale of 0 to 4 for the percentage of tissue stained: 0 (0% positive cells), 1 (<10%), 2 (11-50%), 3 (51-80%), or 4 (>80%). Staining intensity was scored on a scale of 0 to 3: 0, negative staining; 1, weak staining; 2, moderate staining; or 3, strong staining. The two scores were multiplied resulting in an immunoreactivity score value ranging from 0 to 12.

Cell isolation

Spleens from individual mice were mechanically dissociated and RBCs were lysed with lysis buffer (Sigma).

Single-cell suspensions of spleen and colon mesenteric lymph nodes (MLN) were passed through a sterile wire screen (Sigma). Cell suspensions were washed twice in RPMI 1640 (Sigma) and stored in medium containing 10% fetal bovine serum on ice until used after 1 to 2 h. The small intestine and colon was cut into 1-cm stripes and stirred in PBS containing 1 mmol/L EDTA at 37°C for 30 min. The cells from intestinal LP were isolated as described previously (27). In brief, the LP was isolated by digesting intestinal tissue with collagenase type IV (Sigma) in RPMI 1640 (collagenase solution) for 45 min at 37°C with moderate stirring. After a 45-min interval, the released cells were centrifuged and stored in complete medium and mucosal pieces were replaced with fresh collagenase solution. This was repeated twice. LP cells were further purified using a discontinuous Percoll (Pharmacia) gradient collecting at the 40% to 75% interface. Lymphocytes were maintained in complete medium, which consisted of RPMI

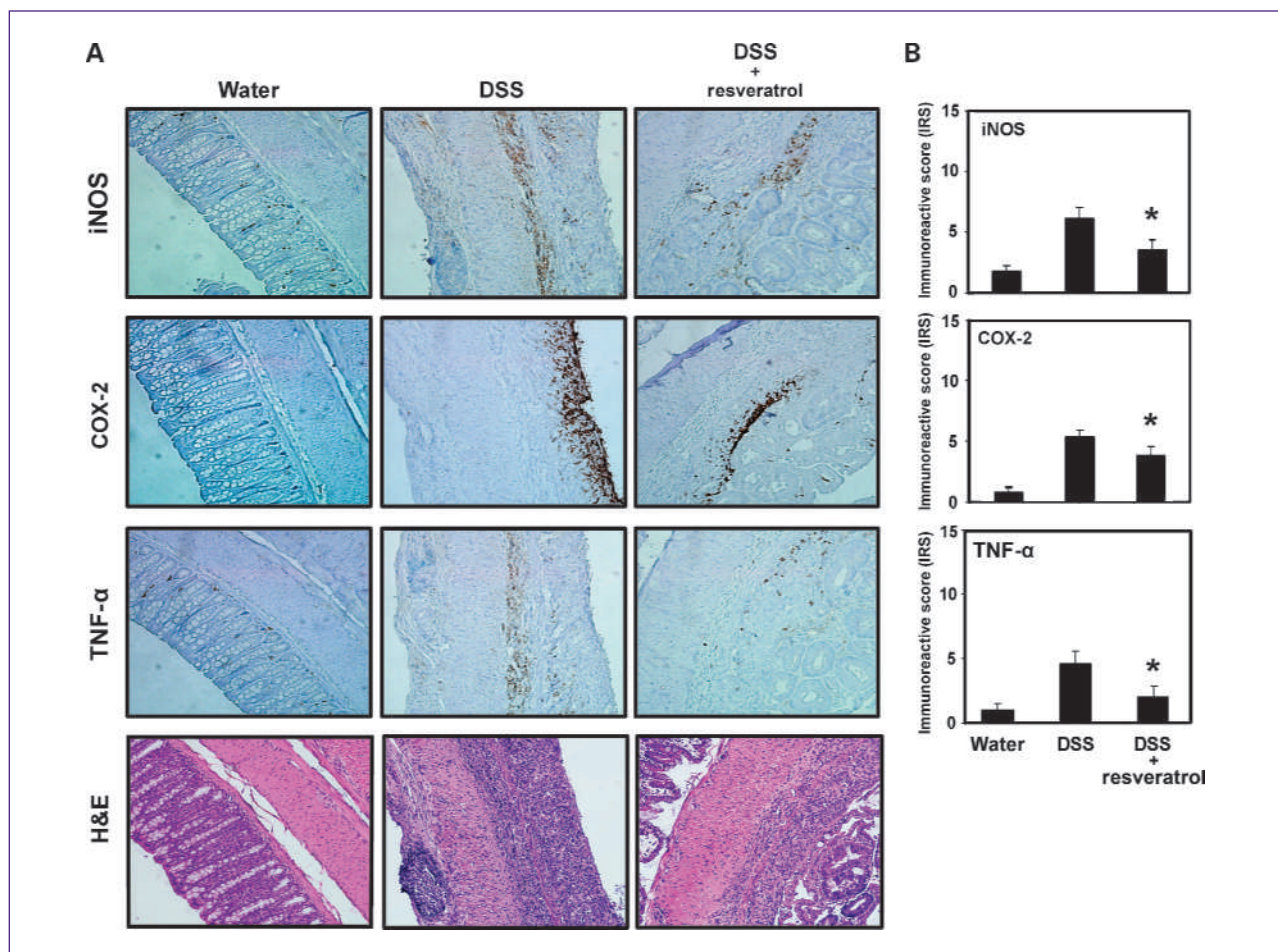


Fig. 4. Resveratrol suppresses the players involved in inflammation (iNOS, COX-2, and TNF- α). Tissues from experiments done for Fig. 1 (300 ppm resveratrol) were examined for iNOS, COX-2, and TNF- α by immunohistochemistry using the Antibody Amplifier rocked on a laboratory rocker to ensure even staining and reproducible results. A, representative staining of indicated end points in serial sections from water ($n = 5$), DSS ($n = 10$), and DSS + resveratrol ($n = 10$) groups. Positive staining is brown colored. Magnification, $\times 200$. B, quantification of indicated end points. All three markers were elevated in the DSS-treated group and suppressed when the DSS-treated group was fed resveratrol (300 ppm). *, $P < 0.01$, significant reduction in % positive cells in the resveratrol + DSS group compared with the DSS group.

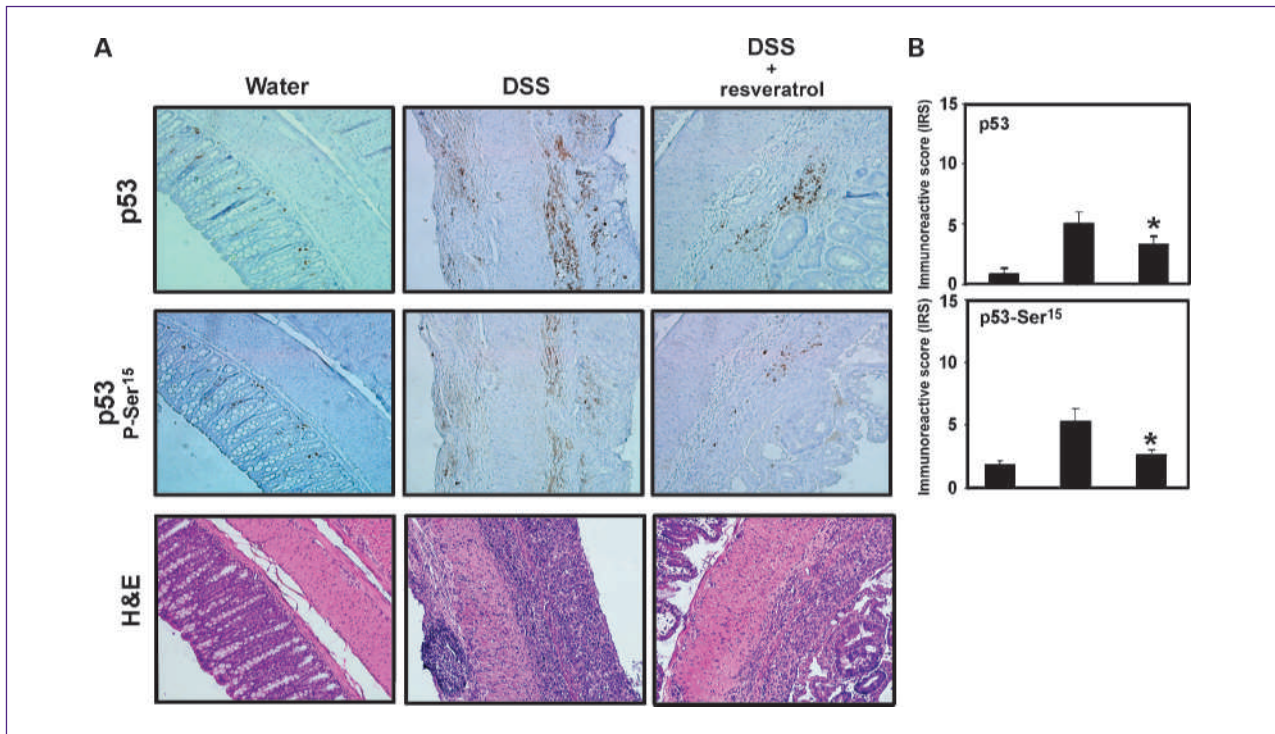


Fig. 5. Resveratrol suppresses the players involved in inflammatory stress (p53 and p53-phospho-Ser¹⁵). Tissues from experiments done for Fig. 1 (300 ppm resveratrol) were examined for p53 and p53-phospho-Ser¹⁵ by immunohistochemistry using the Antibody Amplifier rocked on a laboratory rocker to ensure even staining and reproducible results. A, representative staining of indicated end points in serial sections from water ($n = 5$), DSS ($n = 10$), and DSS + resveratrol ($n = 10$) groups. Positive staining is brown colored. Magnification, $\times 200$. B, quantification of indicated end points. Both markers were elevated in the DSS-treated group and suppressed when the DSS-treated group was fed resveratrol (300 ppm). *, $P < 0.01$, significant reduction in % positive cells in the resveratrol + DSS group compared with the DSS group alone.

1640 supplemented with 10 mL/L of nonessential amino acids (Mediatech), 1 mmol/L sodium pyruvate (Sigma), 10 mmol/L HEPES (Mediatech), 100 units/mL penicillin, 100 μ g/mL streptomycin, 40 μ g/mL gentamicin (Elkins-Sinn, Inc.), 50 μ mol/L mercaptoethanol (Sigma), and 10% FCS (Atlanta Biologicals).

Flow cytometry analysis

Cells from the spleen, MLN, and LP were freshly isolated as described above for each experimental group. Fluorescence-activated cell sorting (FACS) cell surface antigen staining cells were preblocked with Fc receptors for 15 min at 4°C. The cells were washed with FACS staining buffer (PBS with 1% bovine serum albumin) and then stained with CY-conjugated anti-CD3 (145-2C11) and FITC-conjugated LY6G (neutrophils; BD Pharmingen) for 30 min with occasional shaking at 4°C. The cells were washed twice with FACS staining buffer and resuspended in BD Cytotfix/Cytoperm (BD Pharmingen) solution for 20 min. Again, cells were washed twice in BD Perm/Wash solution. For intracellular cytokines, resuspended fixed permeabilized cells were stained with predetermined allophycocyanin fluorochrome-conjugated anti-cytokine antibody (TNF- α and IFN- γ for 30 min at 4°C in the dark). Lymphocytes were then washed with FACS thoroughly

staining buffer and analyzed by flow cytometry (FC 500, Beckman Coulter).

Statistical analysis

With inflammation as an end point, a χ^2 contingency table analysis was done on the DSS and DSS plus resveratrol groups to determine if there was a statistically significant difference in their inflammation scores. For immunohistochemical quantification, mean differences between groups were compared by one-way ANOVA with Scheffe multiple comparison tests. For flow cytometry data, differences between groups were compared using a two-tailed paired Student's t test or an unpaired Mann-Whitney U test. The results were analyzed using the StatView II statistical program (Abacus Concepts, Inc.) and Microsoft Excel (Microsoft) for Macintosh computers. Single-factor variance ANOVA analyses were used to evaluate groups. Tumor incidence was examined using a Fisher's exact test, which is equivalent to a test for binomial proportions. Because the usual assumptions underlying the ANOVA test are not satisfied, in assessing the significance of the F-statistic value from the ANOVA table, instead of using the F-distribution, we used a permutation distribution to examine tumor multiplicity. Finally, a non-parametric Kruskal-Wallis test was used to compare mean

tumor volume. The *P* value chosen for significance in this study was 0.05.

Results

Resveratrol attenuates DSS-induced colitis in a dose-dependent manner

There is increasing evidence that resveratrol targets many key players in inflammation (28, 29). UC is a strong risk factor for colon cancer (17), with chronic inflammatory disease associated with overactive inflammatory cells infiltrating in the colon. Based on this information, we tested the hypothesis that resveratrol can suppress colitis in mice. To test this hypothesis, we used the DSS-induced model of colitis, with and without resveratrol (75, 150, or 300 ppm) treatment. We did not observe any phenotypic characteristics of toxicity (e.g., moribund and weight loss) at any doses of resveratrol used in our studies, and the "no observed adverse effect level" for murine species is 300 mg/kg/d (22). A dose of 300 ppm (the highest dose we used) is equivalent to 42 mg/kg/d in mice, so this lack of toxicity was predicted.

Figure 1 shows that mice fed resveratrol were protected from DSS-induced colitis at doses of 150 ppm ($P < 0.05$ versus DSS treated) and 300 ppm ($P < 0.01$ versus DSS treated) resveratrol. These data are supported by other end points in our experiment. Colon lengths were measured because a short colon is indicative of heavy inflammation (20, 21). Compared with the control (water-treated) group (6.8 ± 0.1 cm), colon length decreased in the DSS-treated group (5.4 ± 0.1 cm; $P < 0.01$) but not in the DSS + resveratrol-treated group (6.3 ± 0.2 cm). Interestingly, colon length increased significantly ($P < 0.01$) in the water + resveratrol group (8.1 ± 0.2 cm) compared with the water only group (6.8 ± 0.1 cm). These results clearly indicate that the resveratrol treatment prevents colitis progression and abrogate the disease as evidenced by the colitis score and colon length.

Characteristics of T helper cells during DSS-induced colitis after resveratrol treatment

Next, we examined whether resveratrol has any effect on systemic cytokine expression after DSS induction. Flow cytometry analysis revealed that CD3⁺ T cells (mainly CD4⁺ T cells) from the MLNs and LP express TNF- α and IFN- γ during DSS-induced acute colitis. DSS-induced mice with acute colitis shows increased numbers of CD3⁺ T cells that express TNF- α and IFN- γ in the MLNs and the number of similar cells in the LP (Fig. 2). However, resveratrol treatment significantly reduced the number of CD3⁺ T-cell infiltrates that express TNF- α and IFN- γ in the MLNs and LP with acute colitis after DSS induction compared with the controls mice and/or mice that received DSS alone (Fig. 2). We did not observe a decline in the number of splenic CD3⁺ T cells expressing IFN- γ and/or TNF- α in mice treated with resveratrol compared with DSS-induced mice. Taken together, these results indicate that resveratrol treatment downregulates systemic TNF- α -expressing and

IFN- γ -expressing T cells in the MLN and LP compared with similar cells obtained from DSS-induced mice with any treatment.

Resveratrol inhibits neutrophil infiltration in DSS-induced mice

Neutrophils are among the first cell type to arrive at a site of inflammation. In UC, neutrophil activation, migration, and degranulation are important effector mechanisms of intestinal damage (30). In addition, circulating and activated neutrophils, a major source of inflammatory cytokines, are elevated in the UC patients. Further, it has been hypothesized in recent reports that neutrophils are involved in DSS-induced colonic mucosal injury. Several lines of evidence support this hypothesis: (a) colonic mucosal ICAM-1 expression is enhanced at an early stage of the inflammatory cascade in DSS-induced colitis (31) and (b) numerous neutrophils accumulate in DSS-treated colonic mucosa and selective depletion of neutrophils by a monoclonal antibody reduces DSS-induced colitis (32). Based on this knowledge, we next examined the percentage changes in mucosal neutrophil expression after resveratrol treatment in DSS-induced colitis. Interestingly, we noticed a dramatic increase in percentage of neutrophils in the DSS-challenged group of mice compared with the other groups of mice in the MLN and LP (Fig. 3). At the same time, resveratrol significantly reduced the percentage of neutrophils in MLN and LP compared with control or DSS alone group. Taken together, these results indicate that the number of neutrophils increased both at MLN and LP sites after DSS induction and resveratrol significantly reduced these numbers.

Resveratrol suppresses markers of inflammation

To further quantify the effect of resveratrol on inflammatory markers *in vivo*, we examined iNOS, COX-2, and TNF- α expression. Tissues from the experiment using 300 ppm resveratrol were used for these purposes. Immunohistochemical staining was accomplished by rocking slides using the Antibody Amplifier to ensure even, consistent, sensitive, and reproducible staining. Figure 4A shows representative sections of end point as indicated. Figure 4B shows quantification of each staining. Overall, iNOS, COX-2, and TNF- α levels were reduced in DSS-treated mice consuming 300 ppm resveratrol compared with DSS-treated mice consuming regular basal diet.

Resveratrol suppresses markers of inflammatory stress

p53 is a key biosensor of inflammatory stress. Because p53 is activated by phosphorylation at Ser¹⁵ during inflammatory stress (33), we also probed tissue sections for these markers. Figure 5A shows representative sections of end points as indicated. These were serial sections of the same mice shown in Fig. 4A. Figure 5B shows quantification of staining. Overall, p53 and p53-phospho-Ser¹⁵ levels were reduced in DSS-treated mice consuming 300 ppm

resveratrol compared with DSS-treated mice consuming regular basal diet.

Resveratrol suppresses colon cancer associated with colitis

We have shown that resveratrol suppresses colitis. Because both mice and humans with chronic colitis are at a high risk for colon cancer, here, we tested the hypothesis that resveratrol prevents the onset of colon cancer in a mouse model of colitis-driven colon cancer. Table 1 shows that 80% (8 of 10) of mice treated with AOM + DSS had colon tumors. The mice treated with AOM + DSS + resveratrol (300 ppm) had a tumor incidence of 20% (2 of 10). This difference was statistically significant using a Fisher's exact test ($P < 0.05$).

Tumor multiplicity (number of tumors per animal) also decreased with resveratrol treatment (Table 1). The total number of macroscopic lesions in the AOM + DSS group was 23 and the total number of macroscopic lesions in the AOM + DSS + resveratrol group was 2. Permutation distribution analysis found similar results to that of tumor incidence. The difference between the AOM + DSS (2.4 ± 0.7 tumors per animal) and AOM + DSS + 300 ppm resveratrol (0.2 ± 0.13 tumors per animal) was statistically significant ($P < 0.05$). Finally, although tumor volume (mm^2) was decreased with resveratrol treatment (Table 1), this difference was not statistically significant.

Supplementary Fig. S3A shows colon sections representative of the indicated group. Supplementary Fig. S3 shows H&E histologic sections of each group as indicated. On histologic evaluation of the tumors, we found that there were no invasive cancers, consistent with other similar studies (34, 35). In the AOM + DSS-treated group, 25% of the lesions were adenomas with low-grade dysplasia, and 47% were adenomas with high-grade dysplasia. The remaining lesions (28%) were carcinoma *in situ*. In contrast, in the AOM + DSS + 300 ppm resveratrol-treated group, more than double the lesions (58%) were adenomas with low-grade dysplasia and less lesions were adenomas with high-grade dysplasia (16%) as well as carcinoma *in situ* (26%). Although initially surprising that no adenocarcinomas were observed, the tumor histology varies greatly depending on many factors, including mouse strain (36), housing conditions affecting intestinal microflora (37), as well as the AOM/DSS treatment regimen. We

used 1% DSS here, which is relatively low compared with other studies, which have used up to 4% DSS (38). A recent study on C57BL/6 mice (the same strain of mouse used here) using 3% DSS also found no evidence of invasive colorectal adenocarcinomas (35).

Discussion

Although there has been progress into the treatment of UC (39), current strategies often bring side effects with marginal results and have population-specific efficacy. Alternative treatment strategies are therefore needed. We show here that the consumption of resveratrol, a popular ingredient in red wine and the skin of red grapes, is non-toxic and capable of suppressing colitis in mice at 150 and 300 ppm in the diet. This agrees with one other group who has shown that resveratrol suppresses colitis induced by trinitrobenzenesulfonic acid (TNBS) in rats (15, 16). Resveratrol in those studies was administered by oral gavage at 5 to 10 mg/kg/d. By mixing resveratrol in the basal diet, we were able to generate similar results in mice, in that 150 and 300 ppm (equivalent to 21 and 42 mg/kg/d, respectively, in mice and 116 and 232 mg/kg/d, respectively, in humans) suppress DSS-induced colitis.

Consistent with the known antioxidant and anti-inflammatory properties of resveratrol, immunohistochemical staining for iNOS, COX-2, and TNF- α was also reduced in mice drinking DSS-spiked water and consuming resveratrol. These end points (iNOS, COX-2, and TNF- α) are key mediators of colitis (40–45). The mechanism of resveratrol in the inhibition of these molecules is a subject of further detailed investigation. Recent studies indicate that resveratrol inhibits the nuclear translocation and activation of NF- κ B, which transcriptionally regulates iNOS and COX-2 (46–50). Similarly, suppression of resveratrol has been shown to suppress COX-2 expression by blocking the activation of mitogen-activated protein kinases and activator protein-1 (51). Because TNF- α transcriptionally regulates iNOS and COX-2 (52, 53), the ability of resveratrol to inhibit gene expression of TNF- α (54) may also be a mechanistic link between such molecules and the suppression of colitis.

Elevated TNF- α is associated with both human IBD and murine colitis (32). Reports from other studies indicate that TNF- α production plays an important role in

Table 1. Tumor incidence and multiplicity in mice treated with AOM/DSS \pm resveratrol

Group	<i>n</i>	% Animals with colon tumors (incidence)	No. tumors per animal (multiplicity), mean \pm SE	Average size of tumors (mm^2), mean \pm SE
AOM + DSS	10	80%	2.4 ± 0.7	1.4 ± 0.3
AOM + resveratrol	10	0%	0	—
AOM + DSS + resveratrol	10	20%*	$0.2 \pm 0.13^*$	1.1 ± 0.4

*Significant difference from AOM + DSS-treated group (see Materials and Methods for statistics).

TNBS-induced chronic colitis (55). IFN- γ also plays a critical role in the induction and progression of colitis (56). In the present study, we show that mucosal and/or systemic TNF- α and IFN- γ expression was decreased by resveratrol treatment in mice after DSS induction. These results agree with previous published *in vivo* and *in vitro* data, where resveratrol has been shown to reduce the level of inflammatory cytokines and inflammatory cell infiltrates in the colon (15, 16, 57, 58).

Neutrophils significantly contribute to the pathogenesis of IBD. Disease activity in UC is linked to an influx of neutrophils in the mucosa and subsequently in the intestinal lumen, resulting in the formation of crypt abscesses. It has been reported in the past that in rats, monoclonal antibody-mediated depletion of neutrophils decreases several parameters of DSS-induced colitis (32). In another study, it has been shown that blockade of neutrophil adhesion with the CD11b/CD18 antibody reduced the cellular infiltrates in rectal administration of TNBS-induced colitis (59). Recently, it has been shown that neutrophil elastase enzyme activity is significantly elevated in both plasma and colonic mucosal tissues in UC patients and ONO-5046 (neutrophil elastase-specific inhibitors) exerts therapeutic effect in DSS-induced colitis by correcting weight loss and inflammation scores (60). In the present study, we have shown that the percentage of neutrophils in MLN and LP significantly increased in the DSS-induced mice compared with naive mice. The resveratrol treatment significantly diminished the neutrophil numbers compared with DSS-induced mice. The present study corroborates the above findings and suggests that resveratrol might be a nontoxic, alternative medicine strategy for the treatment of DSS-induced colitis.

Inflammatory stress is associated with the phosphorylation of p53 and Ser¹⁵ and subsequent p53 stabilization (33). Therefore, another key finding is that mice drinking DSS water and consuming resveratrol have suppressed expression of p53 and p53-Ser¹⁵ phosphorylation. This has been observed in other diseases associated with inflammatory stress. For example, resveratrol suppresses induced expression of p53 in a rat diabetic nephropathy model (61). The consequences of this finding are currently being explored. For example, it is possible that p53 is a target of resveratrol-induced apoptosis or senescence of inflamma-

tory cells during colitis. To this end, resveratrol has been shown to induce apoptosis in cancer cells through a p53-mediated mechanism (62). Similarly, resveratrol induces cell cycle arrest in HCT 116 colon cancer cells but not in their p53^{-/-} isogenic counterpart (63), possibly through the promotion of binding of p53 to the cell cycle inhibitor p21 (62, 64). All studies are consistent with the hypothesis that resveratrol not only induces p53 to drive apoptosis (65) but uses the p53 molecule as a molecular node to induce apoptosis.

As a natural extension to our data, here, we also carried out experiments to determine the chemopreventive properties of resveratrol against colitis-driven colon cancer. Although resveratrol is protective against colon cancer previously (2), to our knowledge, this is the first time resveratrol has been shown to reduce tumorigenesis associated with colitis. This is consistent with the hypothesis that the ability of resveratrol to suppress colitis is responsible for its chemopreventive properties. This is not surprising, given the close link between inflammation and cancer (66, 67). Overall, results presented here indicate that resveratrol is a viable, nontoxic therapeutic agent for the treatment of UC and is a potential candidate for the chemoprevention of colon cancer in this population.

Disclosure of Potential Conflicts of Interest

L.J. Hofseth has a patent pending for Antibody Amplifier, used in immunohistochemistry here. The other authors disclosed no potential conflicts of interest.

Acknowledgments

We thank the Pathology Core (Dr. William Hrushesky, Director), Administrative Core (Dr. Frank Berger, Director), Mouse Core (Dr. Marj Pena, Director), and Imaging/Histology Core supported by the Center for Colon Cancer Research (supported by NIH grant P20RR17698-01).

Grant Support

NIH grants 1R03CA141758-01 (L.J. Hofseth) and 1P01AT003961-01A1 (P.S. Nagarkatti, L.J. Hofseth, and M. Nagarkatti).

The costs of publication of this article were defrayed in part by the payment of page charges. This article must therefore be hereby marked *advertisement* in accordance with 18 U.S.C. Section 1734 solely to indicate this fact.

Received 06/12/2009; revised 11/06/2009; accepted 11/16/2009; published OnlineFirst 03/23/2010.

References

- Howitz KT, Bitterman KJ, Cohen HY, et al. Small molecule activators of sirtuins extend *Saccharomyces cerevisiae* lifespan. *Nature* 2003; 425:191–6.
- Bishayee A. Cancer prevention and treatment with resveratrol: from rodent studies to clinical trials. *Cancer Prev Res* 2009;2: 409–18.
- Udenigwe CC, Ramprasath VR, Aluko RE, Jones PJ. Potential of resveratrol in anticancer and anti-inflammatory therapy. *Nutr Rev* 2008; 66:445–54.
- Rocha-Gonzalez HI, Ambriz-Tututi M, Granados-Soto V. Resveratrol: a natural compound with pharmacological potential in neurodegenerative diseases. *CNS Neurosci Ther* 2008;14:234–47.
- Baxter RA. Anti-aging properties of resveratrol: review and report of a potent new antioxidant skin care formulation. *J Cosmet Dermatol* 2008;7:2–7.
- Das S, Das DK. Resveratrol: a therapeutic promise for cardiovascular diseases. *Recent Patents Cardiovasc Drug Discov* 2007;2:133–8.
- Palsamy P, Subramanian S. Resveratrol, a natural phytoalexin, normalizes hyperglycemia in streptozotocin-nicotinamide induced experimental diabetic rats. *Biomed Pharmacother* 2008;62:598–605.
- Gresele P, Pignatelli P, Guglielmini G, et al. Resveratrol, at concentrations attainable with moderate wine consumption, stimulates human platelet nitric oxide production. *J Nutr* 2008;138:1602–8.
- Rakici O, Kiziltepe U, Coskun B, et al. Effects of resveratrol on vascular tone and endothelial function of human saphenous vein and internal mammary artery. *Int J Cardiol* 2005;105:209–15.

10. Boockchay DJ, Faust GE, Patel KR, et al. Phase I dose escalation pharmacokinetic study in healthy volunteers of resveratrol, a potential cancer chemopreventive agent. *Cancer Epidemiol Biomarkers Prev* 2007;16:1246–52.
11. Singh NP, Hegde VL, Hofseth LJ, et al. Resveratrol (*trans*-3,5,4'-trihydroxystilbene) ameliorates experimental allergic encephalomyelitis, primarily via induction of apoptosis in T cells involving activation of aryl hydrocarbon receptor and estrogen receptor. *Mol Pharmacol* 2007;72:1508–21.
12. Imler TJ, Jr., Petro TM. Decreased severity of experimental autoimmune encephalomyelitis during resveratrol administration is associated with increased IL-17(+)/IL-10(+) T cells, CD4(-) IFN- γ (+) cells, and decreased macrophage IL-6 expression. *Int Immunopharmacol* 2009;9:134–43.
13. Yoshida Y, Shioi T, Izumi T. Resveratrol ameliorates experimental autoimmune myocarditis. *Circ J* 2007;71:397–404.
14. Aribal-Kocaturk P, Kavas GO, Buyukkagnici DI. Pretreatment effect of resveratrol on streptozotocin-induced diabetes in rats. *Biol Trace Elem Res* 2007;118:244–9.
15. Martin AR, Villegas I, La Casa C, de la Lastra CA. Resveratrol, a polyphenol found in grapes, suppresses oxidative damage and stimulates apoptosis during early colonic inflammation in rats. *Biochem Pharmacol* 2004;67:1399–410.
16. Martin AR, Villegas I, Sanchez-Hidalgo M, de la Lastra CA. The effects of resveratrol, a phytoalexin derived from red wines, on chronic inflammation induced in an experimentally induced colitis model. *Br J Pharmacol* 2006;147:873–85.
17. Itzkowitz SH, Yio X. Inflammation and cancer IV. Colorectal cancer in inflammatory bowel disease: the role of inflammation. *Am J Physiol Gastrointest Liver Physiol* 2004;287:G7–17.
18. Hiilsden RJ, Verhoef MJ, Best A, Pocobelli G. Complementary and alternative medicine use by Canadian patients with inflammatory bowel disease: results from a national survey. *Am J Gastroenterol* 2003;98:1563–8.
19. Head K, Jurenka JS. Inflammatory bowel disease. Part II. Crohn's disease—pathophysiology and conventional and alternative treatment options. *Altern Med Rev* 2004;9:360–401.
20. Jin Y, Kotakadi VS, Ying L, et al. American ginseng suppresses inflammation and DNA damage associated with mouse colitis. *Carcinogenesis* 2008;29:2351–9.
21. Kotakadi VS, Jin Y, Hofseth AB, et al. *Ginkgo biloba* extract EGb 761 has anti-inflammatory properties and ameliorates colitis in mice by driving effector T cell apoptosis. *Carcinogenesis* 2008;29:1799–806.
22. Haneke KE. *trans*-Resveratrol: review of toxicological literature. Research Triangle Park (NC): National Institute of Environmental Health Sciences; 2002. p. 1–64.
23. Abd El-Mohsen M, Baye H, Kuhnle G, et al. Distribution of [3 H] *trans*-resveratrol in rat tissues following oral administration. *Br J Nutr* 2006;96:62–70.
24. Reagan-Shaw S, Nihal M, Ahmad N. Dose translation from animal to human studies revisited. *FASEB J* 2008;22:659–61.
25. Wirtz S, Neufert C, Weigmann B, Neurath MF. Chemically induced mouse models of intestinal inflammation. *Nat Protoc* 2007;2:541–6.
26. Denkert C, Koch I, von Keyserlingk N, et al. Expression of the ELAV-like protein HuR in human colon cancer: association with tumor stage and cyclooxygenase-2. *Mod Pathol* 2006;19:1261–9.
27. Singh UP, Singh S, Taub DD, Lillard JW, Jr. Inhibition of IFN- γ -inducible protein-10 abrogates colitis in IL-10-/- mice. *J Immunol* 2003;171:1401–6.
28. Birrell MA, McCluskie K, Wong S, et al. Resveratrol, an extract of red wine, inhibits lipopolysaccharide induced airway neutrophilia and inflammatory mediators through an NF- κ B-independent mechanism. *FASEB J* 2005;19:840–1.
29. Kundu JK, Surh YJ. Cancer chemopreventive and therapeutic potential of resveratrol: mechanistic perspectives. *Cancer Lett* 2008;269:243–61.
30. Verspaget HW, Pena AS, Weterman IT, Lamers CB. Diminished neutrophil function in Crohn's disease and ulcerative colitis identified by decreased oxidative metabolism and low superoxide dismutase content. *Gut* 1988;29:223–8.
31. Breider MA, Eppinger M, Gough A. Intercellular adhesion molecule-1 expression in dextran sodium sulfate-induced colitis in rats. *Vet Pathol* 1997;34:598–604.
32. Natsui M, Kawasaki K, Takizawa H, et al. Selective depletion of neutrophils by a monoclonal antibody, RP-3, suppresses dextran sulphate sodium-induced colitis in rats. *J Gastroenterol Hepatol* 1997;12:801–8.
33. Hofseth LJ, Saito S, Hussain SP, et al. Nitric oxide-induced cellular stress and p53 activation in chronic inflammation. *Proc Natl Acad Sci U S A* 2003;100:143–8.
34. Clapper ML, Gary MA, Coudry RA, et al. 5-Aminosalicylic acid inhibits colitis-associated colorectal dysplasias in the mouse model of azoxymethane/dextran sulfate sodium-induced colitis. *Inflamm Bowel Dis* 2008;14:1341–7.
35. Onizawa M, Nagaishi T, Kanai T, et al. Signaling pathway via TNF- α /NF- κ B in intestinal epithelial cells may be directly involved in colitis-associated carcinogenesis. *Am J Physiol Gastrointest Liver Physiol* 2009;296:G850–9.
36. Suzuki R, Kohno H, Sugie S, et al. Strain differences in the susceptibility to azoxymethane and dextran sodium sulfate-induced colon carcinogenesis in mice. *Carcinogenesis* 2006;27:162–9.
37. Kim SC, Tonkonogy SL, Albright CA, et al. Variable phenotypes of enterocolitis in interleukin 10-deficient mice monoassociated with two different commensal bacteria. *Gastroenterology* 2005;128:891–906.
38. Chang WC, Coudry RA, Clapper ML, et al. Loss of p53 enhances the induction of colitis-associated neoplasia by dextran sulfate sodium. *Carcinogenesis* 2007;28:2375–81.
39. Targan SR. Current limitations of IBD treatment: where do we go from here? *Ann N Y Acad Sci* 2006;1072:1–8.
40. Zingarelli B, Szabo C, Salzman AL. Reduced oxidative and nitrosative damage in murine experimental colitis in the absence of inducible nitric oxide synthase. *Gut* 1999;45:199–209.
41. Kankuri E, Vaali K, Knowles RG, et al. Suppression of acute experimental colitis by a highly selective inducible nitric-oxide synthase inhibitor, N-[3-(aminomethyl)benzyl]acetamidine. *J Pharmacol Exp Ther* 2001;298:1128–32.
42. Beck PL, Li Y, Wong J, et al. Inducible nitric oxide synthase from bone marrow-derived cells plays a critical role in regulating colonic inflammation. *Gastroenterology* 2007;132:1778–90.
43. El-Medany A, Mahgoub A, Mustafa A, et al. The effects of selective cyclooxygenase-2 inhibitors, celecoxib and rofecoxib, on experimental colitis induced by acetic acid in rats. *Eur J Pharmacol* 2005;507:291–9.
44. Popivanova BK, Kitamura K, Wu Y, et al. Blocking TNF- α in mice reduces colorectal carcinogenesis associated with chronic colitis. *J Clin Invest* 2008;118:560–70.
45. Murthy S, Flanigan A, Coppola D, Buelow R. RDP58, a locally active TNF inhibitor, is effective in the dextran sulphate mouse model of chronic colitis. *Inflamm Res* 2002;51:522–31.
46. Kim YA, Kim GY, Park KY, Choi YH. Resveratrol inhibits nitric oxide and prostaglandin E2 production by lipopolysaccharide-activated C6 microglia. *J Med Food* 2007;10:218–24.
47. Nunokawa Y, Oikawa S, Tanaka S. Human inducible nitric oxide synthase gene is transcriptionally regulated by nuclear factor- κ B dependent mechanism. *Biochem Biophys Res Commun* 1996;223:347–52.
48. Zamamiri-Davis F, Lu Y, Thompson JT, et al. Nuclear factor- κ B mediates over-expression of cyclooxygenase-2 during activation of RAW 264.7 macrophages in selenium deficiency. *Free Radic Biol Med* 2002;32:890–7.
49. Kim YA, Lim SY, Rhee SH, et al. Resveratrol inhibits inducible nitric oxide synthase and cyclooxygenase-2 expression in β -amyloid-treated C6 glioma cells. *Int J Mol Med* 2006;17:1069–75.
50. Tsai SH, Lin-Shiau SY, Lin JK. Suppression of nitric oxide synthase and the down-regulation of the activation of NF κ B in macrophages by resveratrol. *Br J Pharmacol* 1999;126:673–80.
51. Kundu JK, Chun KS, Kim SO, Surh YJ. Resveratrol inhibits phorbol ester-induced cyclooxygenase-2 expression in mouse skin: MAPKs and AP-1 as potential molecular targets. *Biofactors* 2004;21:33–9.

52. Kaviani A, Ohta M, Itani R, et al. Tumor necrosis factor- α regulates inducible nitric oxide synthase gene expression in the portal hypertensive gastric mucosa of the rat. *J Gastrointest Surg* 1997;1:371–6.
53. Yamamoto K, Arakawa T, Ueda N, Yamamoto S. Transcriptional roles of nuclear factor κ B and nuclear factor-interleukin-6 in the tumor necrosis factor α -dependent induction of cyclooxygenase-2 in MC3T3-E1 cells. *J Biol Chem* 1995;270:31315–20.
54. Kowalski J, Samojedny A, Paul M, et al. Effect of apigenin, kaempferol and resveratrol on the expression of interleukin-1 β and tumor necrosis factor- α genes in J774.2 macrophages. *Pharmacol Rep* 2005;57:390–4.
55. Nakai M, Sudo K, Yamada Y, et al. The role of the tumor necrosis factor receptor in 2,4,6-trinitrobenzene sulfonic acid (TNBS)-induced colitis in mice. *Dig Dis Sci* 2005;50:1669–76.
56. Obermeier F, Kojouharoff G, Hans W, et al. Interferon- γ and tumour necrosis factor (TNF)-induced nitric oxide as toxic effector molecule in chronic dextran sulphate sodium (DSS)-induced colitis in mice. *Clin Exp Immunol* 1999;116:238–45.
57. Gao X, Xu YX, Janakiraman N, et al. Immunomodulatory activity of resveratrol: suppression of lymphocyte proliferation, development of cell-mediated cytotoxicity, and cytokine production. *Biochem Pharmacol* 2001;62:1299–308.
58. Bi XL, Yang JY, Dong YX, et al. Resveratrol inhibits nitric oxide and TNF- α production by lipopolysaccharide-activated microglia. *Int Immunopharmacol* 2005;5:185–93.
59. Palmén MJ, Dijkstra CD, van der Ende MB, et al. Anti-CD11b/CD18 antibodies reduce inflammation in acute colitis in rats. *Clin Exp Immunol* 1995;101:351–6.
60. Morohoshi Y, Matsuoka K, Chinen H, et al. Inhibition of neutrophil elastase prevents the development of murine dextran sulfate sodium-induced colitis. *J Gastroenterol* 2006;41:318–24.
61. Tikoo K, Singh K, Kabra D, et al. Change in histone H3 phosphorylation, MAP kinase p38, SIR 2 and p53 expression by resveratrol in preventing streptozotocin induced type I diabetic nephropathy. *Free Radic Res* 2008;42:397–404.
62. Lin HY, Sun M, Tang HY, et al. Resveratrol causes COX-2- and p53-dependent apoptosis in head and neck squamous cell cancer cells. *J Cell Biochem* 2008;104:2131–42.
63. Heiss EH, Schilder YD, Dirsch VM. Chronic treatment with resveratrol induces redox stress- and ataxia telangiectasia-mutated (ATM)-dependent senescence in p53-positive cancer cells. *J Biol Chem* 2007;282:26759–66.
64. Lontas A, Yeger H. Curcumin and resveratrol induce apoptosis and nuclear translocation and activation of p53 in human neuroblastoma. *Anticancer Res* 2004;24:987–98.
65. She QB, Bode AM, Ma WY, et al. Resveratrol-induced activation of p53 and apoptosis is mediated by extracellular-signal-regulated protein kinases and p38 kinase. *Cancer Res* 2001;61:1604–10.
66. Hofseth LJ, Ying L. Identifying and defusing weapons of mass inflammation in carcinogenesis. *Biochim Biophys Acta* 2006;1765:74–84.
67. Hussain SP, Hofseth LJ, Harris CC. Radical causes of cancer. *Nat Rev Cancer* 2003;3:276–85.

Cancer Prevention Research

Resveratrol Suppresses Colitis and Colon Cancer Associated with Colitis

Xiangli Cui, Yu Jin, Anne B. Hofseth, et al.

Cancer Prev Res 2010;3:549-559. Published OnlineFirst March 23, 2010.

Updated version Access the most recent version of this article at:
doi:[10.1158/1940-6207.CAPR-09-0117](https://doi.org/10.1158/1940-6207.CAPR-09-0117)

Supplementary Material Access the most recent supplemental material at:
<http://cancerpreventionresearch.aacrjournals.org/content/suppl/2010/03/23/1940-6207.CAPR-09-0117.DC1>

Cited articles This article cites 66 articles, 13 of which you can access for free at:
<http://cancerpreventionresearch.aacrjournals.org/content/3/4/549.full#ref-list-1>

Citing articles This article has been cited by 8 HighWire-hosted articles. Access the articles at:
<http://cancerpreventionresearch.aacrjournals.org/content/3/4/549.full#related-urls>

E-mail alerts [Sign up to receive free email-alerts](#) related to this article or journal.

Reprints and Subscriptions To order reprints of this article or to subscribe to the journal, contact the AACR Publications Department at pubs@aacr.org.

Permissions To request permission to re-use all or part of this article, use this link
<http://cancerpreventionresearch.aacrjournals.org/content/3/4/549>.
Click on "Request Permissions" which will take you to the Copyright Clearance Center's (CCC) Rightslink site.