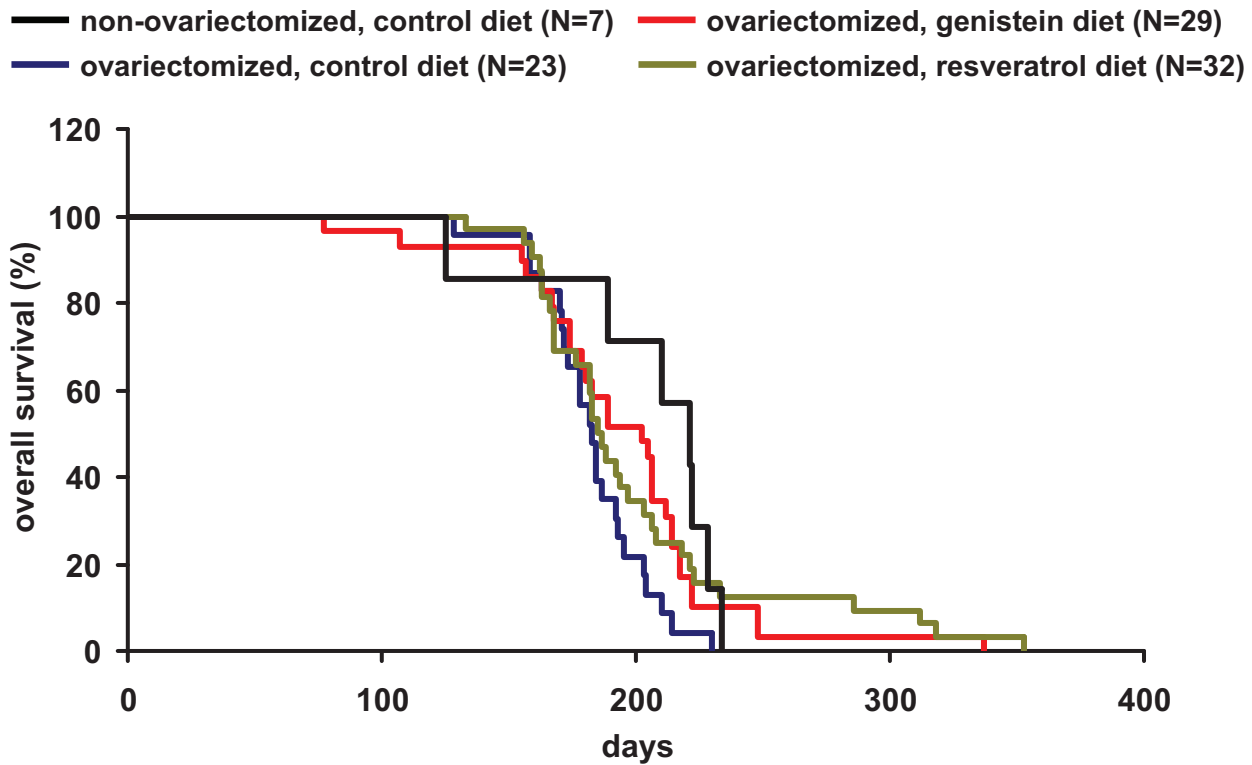


Supplementary Figure 1



Supplementary Figure S1. Influence of ovariectomy on skin tumor incidence of *K14cre;Brca1^{F/F};p53^{F/F}* females, fed with three special diets. As a reference, a K-M curve of non-ovariectomized skin tumor developing animals (black line, N=7) was added, which was significantly ($P=0.018$) different from the K-M curve of the ovariectomized animals on phytoestrogen-free control diet (blue line, N=23). Compared with these latter animals, median tumor latency of skin tumor development was significantly delayed in animals on genistein- (red line, N=29, $P=0.037$) but not on resveratrol- (green line, N=32, $P=0.115$) supplemented (300 mg/kg) test diets. P values were calculated using the Log-rank test.