

Letter from the Editor

Scott M. Lippman	1
-------------------------------	----------

Perspectives

Sporadic Aberrant Crypt Foci Are Not a Surrogate Endpoint for Colorectal Adenoma Prevention. Peter Lance and Stanley R. Hamilton	4
Clinical Prevention of Recurrence of Colorectal Adenomas by the Combination of Difluoromethylornithine and Sulindac: An Important Milestone. Michael B. Sporn and Waun Ki Hong	9
The Oral Cavity as a Molecular Mirror of Lung Carcinogenesis. David Sidransky	12

Commentary

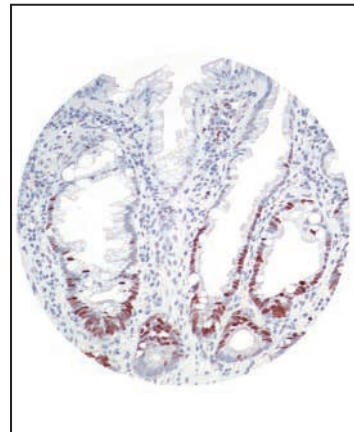
Understanding Microbe-Induced Cancers. Martin J. Blaser	15
--	-----------

Research Articles

Aberrant Crypt Foci in the Adenoma Prevention with Celecoxib Trial. Nancy L. Cho, Mark Redston, Ann G. Zauber, Adelaide M. Carothers, Jason Hornick, Andrew Wilton, Stephen Sontag, Norman Nishioka, Francis M. Giardiello, John R. Saltzman, Chris Gostout, Craig J. Eagle, Ernest T. Hawk and Monica M. Bertagnolli	21
Difluoromethylornithine Plus Sulindac for the Prevention of Sporadic Colorectal Adenomas: A Randomized Placebo-Controlled, Double-Blind Trial. Frank L. Meyskens, Jr., Christine E. McLaren, Daniel Pelot, Sharon Fujikawa-Brooks, Philip M. Carpenter, Ernest Hawk, Gary Kelloff, Michael J. Lawson, Jayashri Kidao, John McCracken, C. Gregory Albers, Dennis J. Ahnen, D. Kim Turgeon, Steven Goldschmid, Peter Lance, Curt H. Hagedorn, Daniel L. Gillen and Eugene W. Gerner	32
Oral Epithelium as a Surrogate Tissue for Assessing Smoking-Induced Molecular Alterations in the Lungs. Manisha Bhutani, Ashutosh Kumar Pathak, You-Hong Fan, Diane D. Liu, J. Jack Lee, Hongli Tang, Jonathan M. Kurie, Rodolfo C. Morice, Edward S. Kim, Waun Ki Hong and Li Mao.....	39
Targeting the Activator Protein 1 Transcription Factor for the Prevention of Estrogen Receptor–Negative Mammary Tumors. Qiang Shen, Ivan P. Uray, Yuxin Li, Yun Zhang, Jamal Hill, Xiao-Chun Xu, Matthew R. Young, Edward J. Gunther, Susan G. Hilsenbeck, Nancy H. Colburn, Lewis A. Chodosh and Powel H. Brown.....	45
A Prediction Model for Lung Cancer Diagnosis that Integrates Genomic and Clinical Features. Jennifer Beane, Paola Sebastiani, Theodore H. Whitfield, Katrina Steiling, Yves-Martine Dumas, Marc E. Lenburg and Avrum Spira	56
Dietary Energy Balance Modulates Signaling through the Akt/Mammalian Target of Rapamycin Pathways in Multiple Epithelial Tissues. Tricia Moore, Linda Beltran, Steve Carbajal, Sara Strom, Jeanine Traag, Stephen D. Hursting and John DiGiovanni	65

About the Cover

The cover image shows an aberrant crypt foci (ACF) from formalin-fixed, paraffin-embedded rectal mucosa at 40X magnification. The lesion was identified and biopsied during colonoscopy. Immunohistochemistry for Ki-67, a proliferation marker, was performed on serial 4-5 μm sections of the tissue. Ki-67 protein is located in the nucleus of cells that are in S-phase of the cell cycle. Nuclei of negative cells show the blue counter-stain, hematoxylin. In normal colon, proliferating enterocytes are restricted to the bottom third of the crypts. The ACF demonstrated was hyperproliferative since the number of positively stained nuclei in enterocytes was greater than matching normal controls. See article by Cho et al. on page 21 for more information. Image courtesy of Adelaide M. Carothers.



Cancer Prevention Research

1 (1)

Cancer Prev Res 2008;1:1-76.

Updated version Access the most recent version of this article at:
<http://cancerpreventionresearch.aacrjournals.org/content/1/1>

E-mail alerts [Sign up to receive free email-alerts](#) related to this article or journal.

Reprints and Subscriptions To order reprints of this article or to subscribe to the journal, contact the AACR Publications Department at pubs@aacr.org.

Permissions To request permission to re-use all or part of this article, use this link <http://cancerpreventionresearch.aacrjournals.org/content/1/1>. Click on "Request Permissions" which will take you to the Copyright Clearance Center's (CCC) Rightslink site.