

## Delphinidin Attenuates Neoplastic Transformation in JB6 Cl41 Mouse Epidermal Cells by Blocking Raf/Mitogen-Activated Protein Kinase Kinase/Extracellular Signal-Regulated Kinase Signaling

Nam Joo Kang,<sup>1,2</sup> Ki Won Lee,<sup>1,3</sup> Jung Yeon Kwon,<sup>2,3</sup> Mun Kyung Hwang,<sup>2,3</sup> Evgeny A. Rogozin,<sup>1</sup> Yong-Seok Heo,<sup>4</sup> Ann M. Bode,<sup>1</sup> Hyong Joo Lee<sup>2</sup> and Zigang Dong<sup>1</sup>

### Abstract

Recent studies suggest that anthocyanidins play a pivotal role in the chemopreventive effects of fruits and vegetables. However, the underlying molecular mechanisms and cellular targets remain unknown. Neoplastic transformation of cells and inflammation are considered to be major events contributing to carcinogenesis. Here, we report that delphinidin, a major dietary anthocyanidin, inhibits tumor promoter-induced transformation and cyclooxygenase-2 (COX-2) expression in JB6 promotion-sensitive mouse skin epidermal (JB6 P+) cells by directly targeting Raf and mitogen-activated protein kinase kinase (MEK). Delphinidin inhibited 12-O-tetradecanoylphorbol-13-acetate (TPA)-induced neoplastic transformation and COX-2 expression at both the protein and transcriptional levels. The activation of activator protein-1 and nuclear factor- $\kappa$ B induced by TPA was dose dependently inhibited by delphinidin treatment. Delphinidin strongly suppressed Raf1 and MEK1 kinase activities and subsequently attenuated TPA-induced phosphorylation of MEK, extracellular signal-regulated kinase (ERK), p90RSK, and MSK. Although delphinidin suppressed ERK and c-Jun NH<sub>2</sub>-terminal kinase activities, it was more effective at inhibiting Raf1 or MEK1 activities. Pull-down and competition assays revealed that delphinidin binds with Raf1 or MEK1 noncompetitively with ATP. Delphinidin also dose dependently suppressed JB6 P+ cell transformation induced by epidermal growth factor and H-Ras, both of which are involved in the activation of Raf/MEK/ERK signaling. Together, these findings suggested that the targeted inhibition of Raf1 and MEK activities and COX-2 expression by delphinidin contribute to the chemopreventive potential of fruits and vegetables.

Neoplastic transformation of cells is one of the major events that occur during the carcinogenic process. Accumulating evidence supports a strong link between inflammation and carcinogenesis (1, 2). Cyclooxygenase-2 (COX-2) expression and its product prostaglandin E<sub>2</sub> (PGE<sub>2</sub>) have been linked to enhanced carcinogenesis, particularly skin cancer (3, 4). Moreover, tumor promoters, such as 12-O-tetradecanoylphorbol-13-

acetate (TPA), epidermal growth factor (EGF), and UV irradiation, induce COX-2 protein expression in the epidermis of the skin and also in epidermal keratinocytes (5). Previous studies showing that COX-2 inhibitors suppress neoplastic transformation suggest that COX-2 overexpression is one of the mechanisms underlying the induction of neoplastic transformation (6, 7). Therefore, inhibiting neoplastic transformation and COX-2 expression might be an effective strategy for delaying carcinogenesis.

Activator protein-1 (AP-1) and nuclear factor- $\kappa$ B (NF- $\kappa$ B) act as pivotal transcription factors in neoplastic transformation and cancer development (6, 8–10), and are regulated by signaling pathways, including the mitogen-activated protein kinase (MAPK) cascades. MAPKs are commonly up-regulated in various cancer cell types and are involved in cell transformation and proliferation (11). Among the components of the MAPK pathways, the MAPK kinase (e.g., Raf)/MAPK kinase (MEK)/extracellular signal-regulated kinase (ERK) cascade has been the focus of cancer chemotherapy because of its relevance in carcinogenesis. Various tumor promoters, including TPA and EGF, are known to induce transformation in various cell lines through the activation of the Raf/MEK/ERK pathway (8, 12, 13). This pathway was also identified as a key downstream effector of *Ras*, an oncogene that is mutated

**Authors' Affiliations:** <sup>1</sup>Hormel Institute, University of Minnesota, Austin, Minnesota and <sup>2</sup>Department of Agricultural Biotechnology, Seoul National University; Departments of <sup>3</sup>Bioscience and Biotechnology and <sup>4</sup>Chemistry, Konkuk University, Seoul, Republic of Korea  
Received 04/10/2008; revised 09/11/2008; accepted 10/01/2008.

**Grant support:** The Hormel Foundation; NIH grants CA027502, CA120388, CA111536, CA077646, and CA081064; and BioGreen21 Program (no. 20070301-034-042), Rural Development Administration, Republic of Korea.

**Note:** N.J. Kang and K.W. Lee contributed equally to this work.

**Requests for reprints:** Zigang Dong, Hormel Institute, University of Minnesota, 801 16th Avenue Northeast, Austin, MN 55912. Phone: 507-437-9600; Fax: 507-437-9606; E-mail: zgdong@hi.umn.edu or Hyong Joo Lee, Department of Agricultural Biotechnology, Seoul National University, Seoul 151-742, Republic of Korea. Phone: 82-2-880-4860; Fax: 82-2-873-5095; E-mail: leehyo@snu.ac.kr.

©2008 American Association for Cancer Research.

doi:10.1158/1940-6207.CAPR-08-0071

in 30% or more of human cancers (14, 15). The Raf/MEK/ERK pathway plays a critical role in linking extracellular signals associated with *Ras* activation to nuclear transcription events (16). Because aberrant activation of ERK was shown in various tumor types (17, 18), the targeted down-regulation of ERK through inhibition of upstream kinases, such as Raf or MEK, seems to be an effective method for intervening in carcinogenesis.

Epidemiologic studies suggest that a high consumption of fruits and vegetables can reduce the risk of cancer. Anthocyanins are naturally occurring polyphenolic compounds that provide intense color to fruits and vegetables, such as berries, red grapes, purple sweet potato, and red cabbages (19). Previous studies showed that anthocyanidins scavenge reactive oxygen species and suppress cell proliferation and migration, tumor cell invasion, and angiogenesis (20–22). Delphinidin (Fig. 1A), a representative dietary anthocyanidin, was shown to exert the strongest antitumor-promoting effects among the anthocyanidins tested, including delphinidin, cyanidin, petunidin, pelargonidin, peonidin, and malvidin, in TPA-promoted cell transformation of JB6 promotion-sensitive mouse skin epidermal (JB6 P+) cells (23). However, the molecular mechanisms and specific targets of the antitumorigenic effects of delphinidin remain unknown. The present study aimed to identify the molecular mechanisms and direct targets of the antitumorigenic effects of delphinidin in tumor promoter-induced neoplastic cell transformation. Here, we report that delphinidin is a potent inhi-

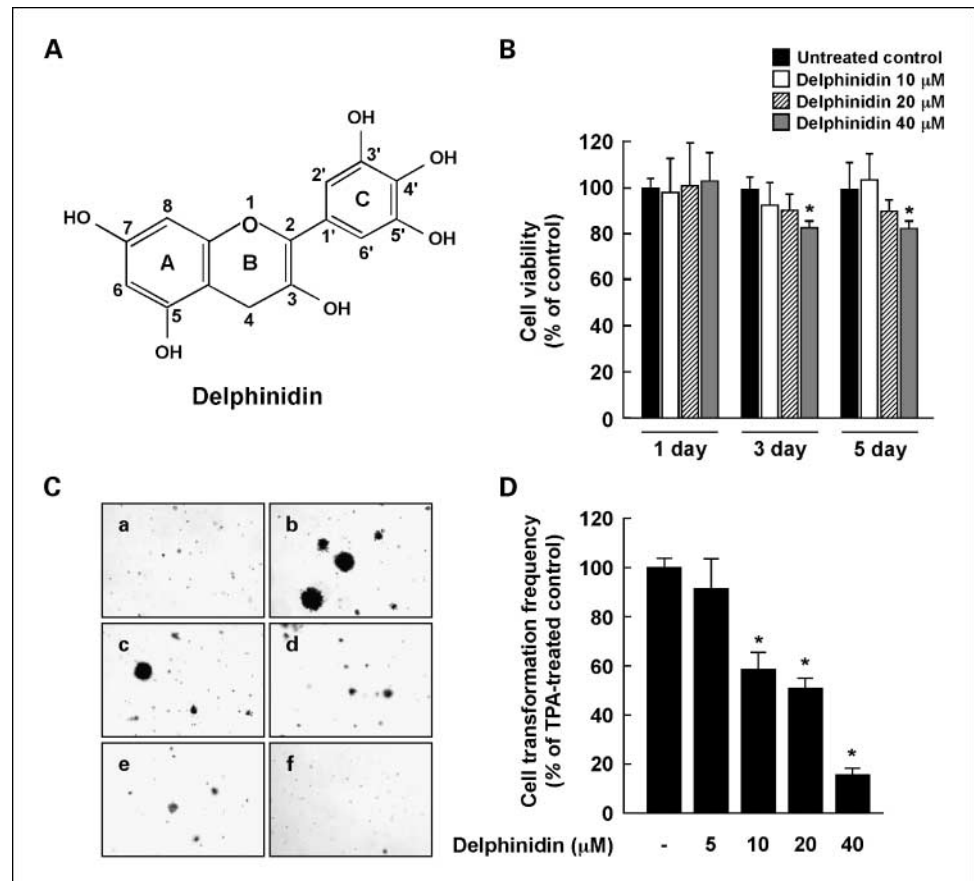
tor of Raf1 and MEK1. The inhibition of Raf1 and MEK1 corresponded with a suppression of the phosphorylation of ERK, p90 ribosomal S6 kinase (p90RSK), and mitogen- and stress-activated protein kinase (MSK), and the suppression of AP-1 and NF- $\kappa$ B activation, which subsequently resulted in an inhibition of neoplastic transformation and decreased COX-2 expression.

## Materials and Methods

### Chemicals

Delphinidin was purchased from Indofine Chemical and EGF, TPA, 3-(4,5-dimethylthiazol-2-yl)-2,5-diphenyltetrazolium bromide (MTT), and DMSO were from Sigma/Aldrich. Eagle's MEM, basal medium Eagle, gentamicin, and  $\gamma$ -l-glutamine were from Life Technologies, and fetal bovine serum (FBS) was from Gemini Bio-Products. The antibodies against phosphorylated MEK (Ser<sup>217/221</sup>), phosphorylated ERK (Thr<sup>202</sup>/Tyr<sup>204</sup>), total ERK, p90RSK, phosphorylated MSK (Thr<sup>581</sup>), and total MSK were from Cell Signal Biotechnology. The antibodies against total MEK, Raf1, and COX-2 were from Santa Cruz Biotechnology. The Raf1, MEK1, ERK2, and c-Jun NH<sub>2</sub>-terminal kinase (JNK) 1 kinase assay kits were obtained from Upstate Biotechnology. CNBr-Sepharose 4B, glutathione-Sepharose 4B, [ $\gamma$ -<sup>32</sup>P]ATP, and a chemiluminescence detection kit were from Amersham Pharmacia Biotech, and the protein assay kit was from Bio-Rad Laboratories. A PGE<sub>2</sub> enzyme immunoassay kit was from Cayman Chemical and the cDNA cycle kit, G418, and the luciferase assay substrate were purchased from Promega. Trizol reagent was from Invitrogen.

**Fig. 1.** Effects of delphinidin on TPA-induced neoplastic transformation of JB6 P+ cells. **A**, chemical structure of delphinidin. **B**, effects of delphinidin on viability of JB6 P+ cells. JB6 P+ cells were treated with delphinidin (0–40  $\mu$ mol/L) or its vehicle, DMSO (<0.1%, as a negative control), in 5% FBS/MEM for the indicated time period. The viability of cells was determined by the MTT assay as described in Materials and Methods. **Columns**, mean of three independent experiments; **bars**, SD. \*, significant difference ( $P < 0.01$ ) compared with untreated control. **C**, delphinidin inhibits TPA-induced cell transformation. JB6 P+ cells were treated as described in Materials and Methods, and colonies were counted 14 d later. **a**, untreated control; **b**, TPA alone; **c**, TPA and 5  $\mu$ mol/L delphinidin; **d**, TPA and 10  $\mu$ mol/L delphinidin; **e**, TPA and 20  $\mu$ mol/L delphinidin; **f**, TPA and 40  $\mu$ mol/L delphinidin. **D**, cell colonies were counted under a microscope with the aid of Image-Pro Plus software (version 4). The effects of delphinidin on cell transformation of JB6 P+ cells are shown as the percent inhibition of cell transformation in soft agar by delphinidin relative to TPA-only stimulated cells. **Columns**, mean of three independent experiments; **bars**, SD. \*, significant difference ( $P < 0.01$ ) between groups treated with TPA and delphinidin and the group exposed to TPA alone.



### Cell culture

JB6 P+ cells and H-Ras–transformed JB6 P+ mouse epidermal (H-Ras JB6 P+) cells were cultured in monolayers at 37°C in a 5% CO<sub>2</sub> incubator in MEM containing 5% FBS, 2 mmol/L L-glutamine, and 25 µg/mL gentamicin. JB6 P+ cells stably transfected with a COX-2 luciferase reporter plasmid were a kind gift from Dr. Chauanshu Huang (New York University School of Medicine, New York, NY) and were described in the previous study (24). JB6 P+ cells were stably transfected with a COX-2, AP-1, or NF-κB luciferase reporter plasmid and maintained in 5% FBS/MEM and 200 µg/mL G418.

### Cell viability assay

Cell viability was measured using the MTT assay. Briefly, JB6 P+ cells ( $1 \times 10^4$ ) were seeded into 96-well plates and cultured for 6 h. The cells were treated with delphinidin at various concentrations (0–40 µmol/L). The cells were cultured for different times at 37°C followed by incubation with MTT for 4 h. The absorbance of each well was measured at 570 nm using an ELISA reader (Emax, Molecular Devices) at 24-h intervals up to 120 h.

### Anchorage-independent cell transformation assay

The effects of delphinidin on H-Ras–induced cell transformation or TPA- or EGF-induced cell transformation in JB6 cells were investigated. Basal medium Eagle agar (3.5 mL of 0.5%) containing 10% FBS with or without delphinidin was layered onto each well of six-well plates. JB6 (exposed to TPA or EGF) or H-Ras JB6 cells ( $8 \times 10^3$  mL) treated or not treated with delphinidin were mixed with 1 mL of 0.33% basal medium Eagle agar containing 10% FBS and layered on top of the 0.5% agar layer. The separate cultures were maintained at 37°C in a 5% CO<sub>2</sub> incubator for 14 d, at which time the numbers of cell colonies were counted under a microscope with the aid of the Image-Pro Plus software program (version 4, Media Cybernetics).

### PGE<sub>2</sub> assay

JB6 P+ cells ( $1.5 \times 10^6$ ) were plated in six-well dishes and grown to 80% confluence. The cells were then exposed to 20 ng/mL TPA for 16 h in the presence or absence of delphinidin. The amounts of PGE<sub>2</sub> released into the medium were measured using the PGE<sub>2</sub> enzyme immunoassay kit.

### Reverse transcription-PCR

Reverse transcription-PCR was done in accordance with the instructions provided by Promega. In brief, Trizol reagent was used to extract total RNA from cells, and reverse transcription-PCR was done with a cDNA cycle kit. The sense and antisense primers for COX-2 mRNA were 5'-TGTTCTTGTAACATGACACTTAC-3' and 5'-GAAGTCCTATGTCTTGACCTCATCA-3', respectively, which yielded a 448-bp PCR product. The amplification conditions for COX-2 were 40 cycles of 95°C for 90 s, 63°C for 90 s, and 72°C for 150 s, followed by 1 cycle for 10 min at 72°C. The sense and antisense primers for glyceraldehyde-3-phosphate dehydrogenase mRNA were 5'-GGTGAAGGTCGGTGTGAACGGATTT-3' and 5'-AATGC-CAAAGTTGTCATGGATGACC-3', respectively, which yielded a 448-bp PCR product with 40 cycles of 94°C for 90 s, 54°C for 90 s, and 72°C for 150 s.

### Luciferase assays for COX-2 promoter activity and AP-1 and NF-κB transcriptional activities

Confluent monolayers of JB6 P+ cells stably transfected with a COX-2, AP-1, or NF-κB luciferase reporter plasmid were trypsinized, and cells ( $8 \times 10^3$ ) suspended in 100 µL of 5% FBS/MEM were added to each well of a 96-well plate. Plates were incubated at 37°C in a 5% CO<sub>2</sub> incubator. At 80% to 90% confluence, cells were starved by culturing them in 0.1% FBS/MEM for 24 h. The cells were then treated with delphinidin for 30 min and then exposed to 20 ng/mL TPA for an

additional 24 h to assess COX-2 activity or 12 h to determine AP-1 or NF-κB activities. After treatment, cells were disrupted with 100 µL of lysis buffer [0.1 mol/L potassium phosphate buffer (pH 7.8), 1% Triton X-100, 1 mmol/L DTT, 2 mmol/L EDTA], and the luciferase activity was measured using a luminometer (MicroLumat Plus LB 96V, Berthold Technologies).

### Reporter gene assay for c-fos promoter activity

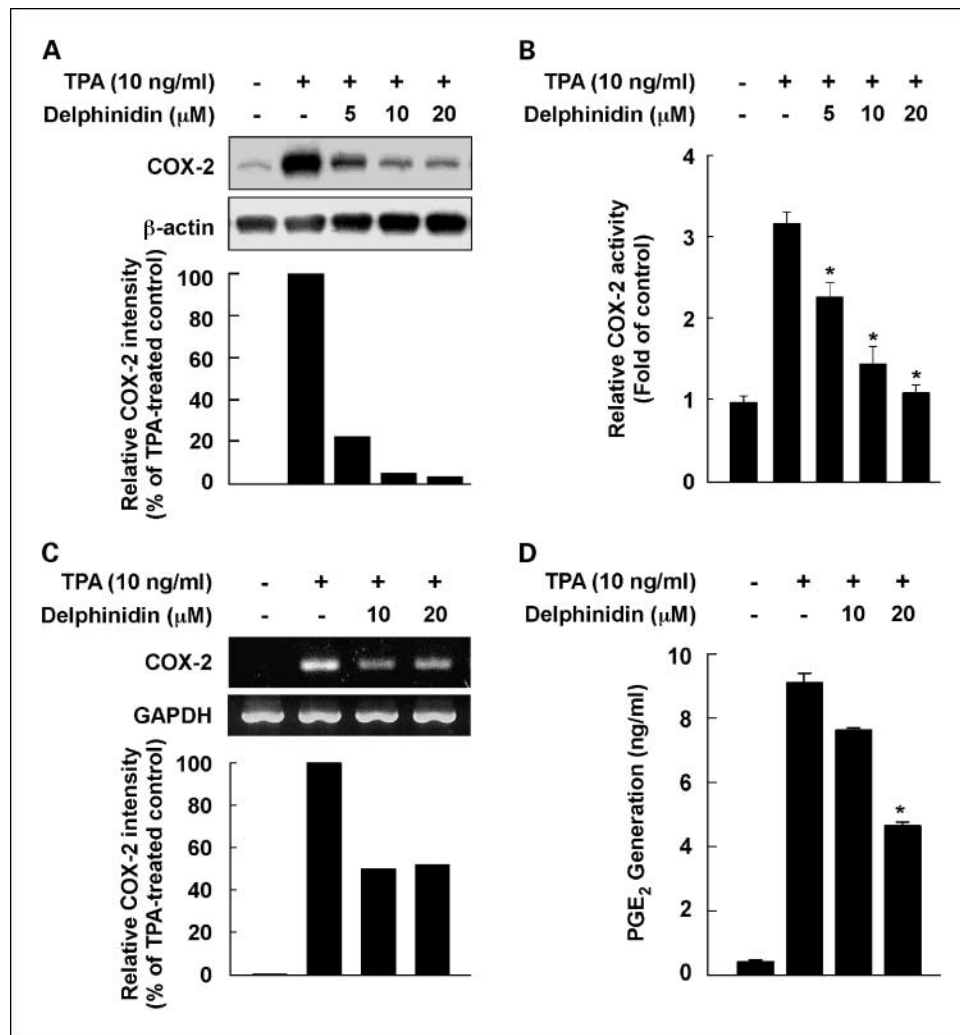
The reporter gene assay for firefly luciferase activity was done using lysates from transfected cells. In addition, the reporter gene vector pRL-SV40 (Promega) was cotransfected into each cell line, with the transfection efficiencies normalized to the *Renilla* luciferase activity generated by this vector. Cell lysates were prepared by first washing the transfected JB6 P+ cells once in PBS at 37°C. After removing the PBS completely, 500 µL of passive lysis buffer (Promega Dual Luciferase Reporter Assay System) were added, and the cells were incubated for 1 h with gentle shaking. The lysate was then transferred to a reaction tube and the cellular debris was removed by centrifugation. The supernatant fraction was used to measure the firefly and *Renilla* luciferase activities. Cell lysates (20 µL each) were mixed with 100 µL of Luciferase Assay II reagent, and the emitted firefly luciferase light was measured (Luminoskan Ascent, Thermo Electron). Subsequently, the coelenterazine reagent (100 µL) containing the substrate for the emission of *Renilla* luciferase light was added for normalizing the firefly luciferase data. The *c-fos* luciferase promoter (pFos-WT GL3) and constructs were kindly provided by Dr. Ron Prywes (Columbia University, New York, NY) and were described in the previous study (25, 26).

### Western blot analysis

After the cells ( $1.5 \times 10^6$ ) were cultured in a 10-cm dish for 48 h, they were starved in serum-free medium for an additional 24 h. The cells were then treated with delphinidin at concentrations from 0 to 20 µmol/L for the indicated durations before being exposed to 20 ng/mL TPA for another 30 min. Cells were disrupted, and the supernatant fractions were boiled for 5 min. The protein concentration was determined using a dye-binding protein assay kit (Bio-Rad Laboratories) as described in the manufacturer's manual. Lysate protein (20 µg) was subjected to 10% SDS-PAGE and then transferred to a polyvinylidene difluoride membrane. After blocking, the membrane was incubated with the appropriate specific primary antibody at 4°C overnight. Protein bands were visualized by a chemiluminescence detection kit after hybridization with the appropriate horseradish peroxidase-conjugated secondary antibody. The relative amounts of proteins associated with specific antibodies were quantified using Scion Image (NIH, Bethesda, MD).

### In vitro MEK1, Raf1, ERK2, and JNK1 kinase assays

The *in vitro* kinase assays were done in accordance with the instructions provided by Upstate Biotechnology. Briefly, each reaction contained 20 µL of assay dilution buffer [20 mmol/L MOPS (pH 7.2), 25 mmol/L β-glycerolphosphate, 5 mmol/L EGTA, 1 mmol/L sodium orthovanadate (Na<sub>3</sub>VO<sub>4</sub>), 1 mmol/L DTT] and a magnesium-ATP cocktail buffer. For MEK1, 1 µg of inactive ERK2 substrate peptide was included; for Raf1, 0.4 µg of inactive MEK substrate peptide and 1 µg of inactive ERK2 substrate peptide were included; and for ERK2, 0.33 mg/mL MBP substrate peptide was included. A 4-µL aliquot was removed after the reaction mixture had incubated at 30°C for 30 min, to which 20 µg of the MBP substrate peptide and 10 µL of diluted [<sup>32</sup>P]ATP solution were added. This mixture was incubated for 10 min at 30°C, and then 25-µL aliquots were transferred onto p81 filter paper and washed thrice with 0.75% phosphoric acid for 5 min per wash and once with acetone for 2 min. For JNK1, the activating transcription factor 2 substrate peptide was included at 3 µmol/L. An active JNK1 protein (20 ng) and 10 µL of diluted [<sup>32</sup>P]ATP solution were incubated at 30°C for 10 min with the above assay buffer and substrate peptide, and then 15-µL aliquots were



**Fig. 2.** Effects of delphinidin on TPA-induced COX-2 expression, COX-2 promoter activity, COX-2 mRNA expression, and PGE<sub>2</sub> production in JB6 P+ cells. **A**, delphinidin down-regulates TPA-induced COX-2 expression in JB6 P+ cells. JB6 P+ cells were treated for 30 min with delphinidin at the indicated concentrations (0, 5, 10, and 20  $\mu$ mol/L) before being exposed to TPA for an additional 4 h. Cells were lysed, and the expression of COX-2 was analyzed by a Western blot assay as described in Materials and Methods. **B**, delphinidin inhibits TPA-induced COX-2 promoter activity in JB6 P+ cells. JB6 P+ cells, which were stably transfected with a COX-2 luciferase reporter plasmid, were pretreated with delphinidin for 30 min at the indicated concentrations (0, 5, 10, and 20  $\mu$ mol/L) before being exposed to TPA for 24 h. The relative COX-2 activity was measured by a luciferase assay as described in Materials and Methods. \*, significant difference ( $P < 0.01$ ) between groups treated with TPA and delphinidin and the group exposed to TPA alone. **C**, delphinidin inhibits TPA-induced COX-2 mRNA expression in JB6 P+ cells. Cells were treated for 2 h with TPA alone or together with delphinidin at the indicated concentrations (0, 10, and 20  $\mu$ mol/L). The COX-2 mRNA level was determined by reverse transcription-PCR as described in Materials and Methods. Data are representative of two independent experiments. **D**, delphinidin inhibits TPA-induced production of PGE<sub>2</sub> in JB6 P+ cells. JB6 P+ cells were pretreated with delphinidin at the indicated concentrations (0, 10, and 20  $\mu$ mol/L) for 30 min before incubation with TPA for 16 h. PGE<sub>2</sub> generation was determined by a PGE<sub>2</sub> assay kit as described in Materials and Methods. \*, significant difference ( $P < 0.01$ ) between groups treated with TPA and delphinidin and the group exposed to TPA alone.

transferred onto p81 paper and washed thrice with 0.75% phosphoric acid for 5 min and once with acetone for 5 min. The radioactive incorporation was determined using a scintillation counter (LS6500, Beckman Coulter). Each experiment was done thrice.

#### Ex vivo Raf1 and MEK1 immunoprecipitation and kinase assays

JB6 P+ cells were cultured to 80% confluence and then starved in 0.1% FBS/MEM for 24 h at 37°C. Cells were treated or not treated with delphinidin for 1 h and then exposed to 20 ng/mL TPA for 30 min, disrupted with lysis buffer [20 mmol/L Tris-HCl (pH 7.4), 1 mmol/L EDTA, 150 mmol/L NaCl, 1 mmol/L EGTA, 1% Triton X-100, 1 mmol/L  $\beta$ -glycerophosphate, 1 mg/mL leupeptin, 1 mmol/L Na<sub>3</sub>VO<sub>4</sub>, 1 mmol/L phenylmethylsulfonyl fluoride], and centrifuged at 14,000 rpm for 10 min in a microcentrifuge. The ly-

sates (500  $\mu$ g protein each) were used for immunoprecipitation with an antibody against Raf1 or MEK1 and then incubated at 4°C overnight. Protein A/G Plus agarose beads were then added, and the mixture was continuously rotated for an additional 3 h at 4°C. The beads were washed thrice with kinase buffer [20 mmol/L MOPS (pH 7.2), 25 mmol/L  $\beta$ -glycerolphosphate, 5 mmol/L EGTA, 1 mmol/L Na<sub>3</sub>VO<sub>4</sub>, 1 mmol/L DTT] and then resuspended in 20  $\mu$ L of 1 $\times$  kinase buffer supplemented with 1  $\mu$ g of inactive ERK2 (for MEK1) or 0.4  $\mu$ g of inactive MEK1 and 1  $\mu$ g of inactive ERK2 (for Raf1) and incubated for an additional 30 min at 30°C. MBP (20  $\mu$ g) and 10  $\mu$ L of diluted [ $\gamma$ -<sup>32</sup>P]ATP solution were then added, and the mixture was incubated for 10 min at 30°C. A 20- $\mu$ L aliquot was transferred onto p81 paper and washed thrice with 0.75% phosphoric acid for 5 min/wash and once with acetone for 2 min. The radioactive incorporation was determined using a scintillation counter. Each experiment was done thrice.

### *In vitro* and *ex vivo* pull-down assays

Recombinant Raf1 (or MEK1; 2  $\mu$ g) or a JB6 P+ cellular supernatant fraction (500  $\mu$ g protein) was incubated with delphinidin/Sepharose 4B beads (100  $\mu$ L, 50% slurry) or Sepharose 4B beads (as a control) in reaction buffer [50 mmol/L Tris-HCl (pH 7.5), 5 mmol/L EDTA, 150 mmol/L NaCl, 1 mmol/L DTT, 0.01% NP40, 2  $\mu$ g/mL bovine serum albumin, 0.02 mmol/L phenylmethylsulfonyl fluoride, 1 $\times$  protease inhibitor mixture]. After incubation with gentle rocking overnight at 4°C, the beads were washed five times with buffer [50 mmol/L Tris-HCl (pH 7.5), 5 mmol/L EDTA, 150 mmol/L NaCl, 1 mmol/L DTT, 0.01% NP40, 0.02 mmol/L phenylmethylsulfonyl fluoride], and proteins bound to the beads were analyzed by immunoblotting.

### ATP and delphinidin competition assay

Recombinant Raf1 (or MEK1; 0.2  $\mu$ g) was incubated with 100  $\mu$ L of delphinidin/Sepharose 4B or 100  $\mu$ L of Sepharose 4B in a reaction buffer (see *in vitro* and *ex vivo* pull-down assays) for 12 h at 4°C, and ATP was added at either 10 or 100  $\mu$ mol/L to a final volume of 500  $\mu$ L and incubated for 30 min. The samples were washed and then proteins were detected by Western blotting.

### Molecular modeling

Insight II (Accelrys) was used for the docking study and structure analysis with the crystal coordinates of MEK1 (accession code 1S9J) and B-Raf (accession code 1UWH) available in the Protein Data Bank.<sup>5</sup>

### Statistical analysis

As necessary, data are presented as means  $\pm$  SD values, and the Student's *t* test was used for single statistical comparisons. A probability value of *P* < 0.01 was used as the criterion for statistical significance.

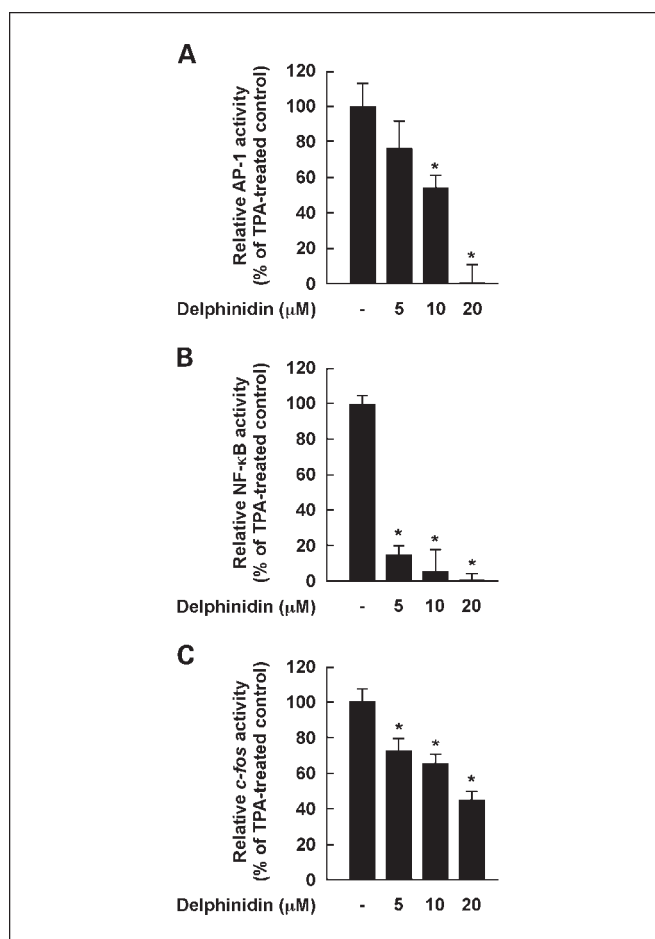
## Results

### Delphinidin inhibits TPA-induced transformation of JB6 P+ cells

Delphinidin had no effect on the viability of JB6 P+ cells when applied at concentrations from 0 to 20  $\mu$ mol/L at 1, 3, or 5 days after treatment (Fig. 1B). TPA is a typical tumor promoter that has been shown to induce two-stage skin carcinogenesis and potently stimulate COX-2 expression in various cell lines (27, 28). Treatment with delphinidin markedly inhibited TPA-promoted transformation of JB6 P+ cells in a dose-dependent manner (Fig. 1C) and at 10  $\mu$ mol/L inhibited TPA-induced neoplastic transformation by 43% (Fig. 1D).

### Delphinidin suppresses TPA-induced COX-2 expression and PGE<sub>2</sub> generation in JB6 P+ cells

Delphinidin at 5 to 20  $\mu$ mol/L inhibited TPA-induced COX-2 expression in JB6 P+ cells (Fig. 2A) and also suppressed TPA-induced COX-2 promoter activity in a dose-dependent manner in JB6 P+ cells stably transfected with a COX-2 luciferase plasmid (Fig. 2B). Delphinidin also attenuated TPA-induced COX-2 expression at the mRNA level (Fig. 2C). The production of PGE<sub>2</sub> peaked at 16 hours following exposure to TPA (data not shown), and delphinidin suppressed the TPA-induced PGE<sub>2</sub> production (Fig. 2D). These results indicated that delphinidin could effectively repress TPA-induced COX-2 expression and PGE<sub>2</sub> production in JB6 P+ cells.



**Fig. 3.** Effects of delphinidin on TPA-induced AP-1 and NF- $\kappa$ B transactivation and *c-fos* promoter activity in JB6 P+ cells. *A* and *B*, delphinidin inhibits TPA-induced AP-1 (*A*) and NF- $\kappa$ B (*B*) transactivation. The JB6 P+ cells were stably transfected with an AP-1 or NF- $\kappa$ B luciferase reporter plasmid and then pretreated with delphinidin for 1 h at the indicated concentrations (0, 5, 10, and 20  $\mu$ mol/L) before being exposed to TPA for 24 h. The relative activity was measured by a luciferase assay as described in Materials and Methods. *Columns*, mean of the AP-1 and NF- $\kappa$ B luciferase activities from three independent experiments; *bars*, SD. *A* and *B*, \*, significant difference (*P* < 0.01) between groups treated with TPA and delphinidin and the group exposed to TPA alone. *C*, delphinidin suppresses TPA-induced *c-fos* promoter activity. For the reporter gene assay, JB6 P+ cells were transfected with a plasmid mixture containing the *c-fos* luciferase reporter gene (0.5  $\mu$ g) and the *pRL-SV40* gene (0.5  $\mu$ g). At 24 h after transfection, cells were starved for 24 h by incubation in 0.1% FBS/MEM at 37°C in a 5% CO<sub>2</sub> atmosphere. Cells were then treated with delphinidin at the indicated concentrations (0, 5, 10, and 20  $\mu$ mol/L) for 1 h before being exposed to TPA for 12 h. Firefly luciferase activity was determined in cell lysates and normalized to *Renilla* luciferase activity, and *c-fos* luciferase activity is expressed relative to control cells not exposed to TPA. *Columns*, mean of the *c-fos* luciferase activity from three independent experiments; *bars*, SD. \*, significant difference (*P* < 0.01) between groups treated with TPA and delphinidin and the group exposed to TPA alone.

### Delphinidin suppresses TPA-induced AP-1 and NF- $\kappa$ B transactivation and *c-fos* promoter activity in JB6 P+ cells

We next measured AP-1 transactivation using JB6 P+ cells stably transfected with an AP-1 luciferase reporter plasmid. Consistent with the above results for cell transformation and COX-2 expression, delphinidin inhibited TPA-induced transactivation of AP-1 (Fig. 3A) and NF- $\kappa$ B (Fig. 3B) in a dose-dependent manner. Because TPA induces *c-fos* expression

<sup>5</sup> <http://www.rcsb.org/pdb/>

mainly through the ERK signaling pathway and subsequently induces AP-1 transactivation, we next investigated whether delphinidin could inhibit *c-fos* promoter activation using the reporter plasmid carrying the *luc* gene under the control of the *c-fos* promoter. Results indicated that delphinidin attenuated TPA-induced *c-fos* promoter activity (Fig. 3C).

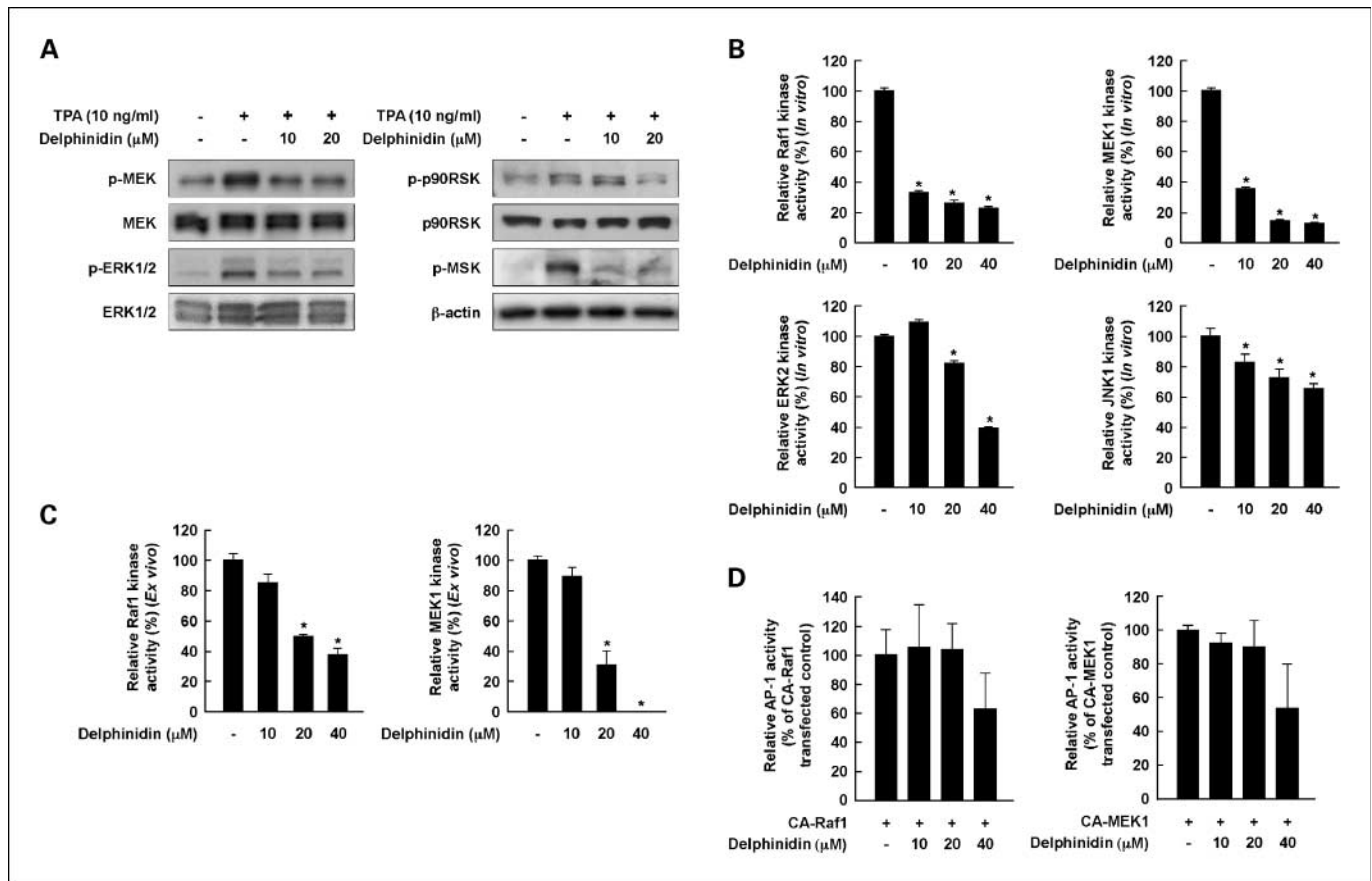
**Delphinidin inhibits TPA-induced phosphorylation of MEK, ERK, p90RSK, or MSK in JB6 P+ cells**

We next found that delphinidin inhibited TPA-induced phosphorylation of MEK and also strongly suppressed the phosphorylation of the MEK downstream kinases, including ERK, p90RSK, and MSK (Fig. 4A). These results suggested

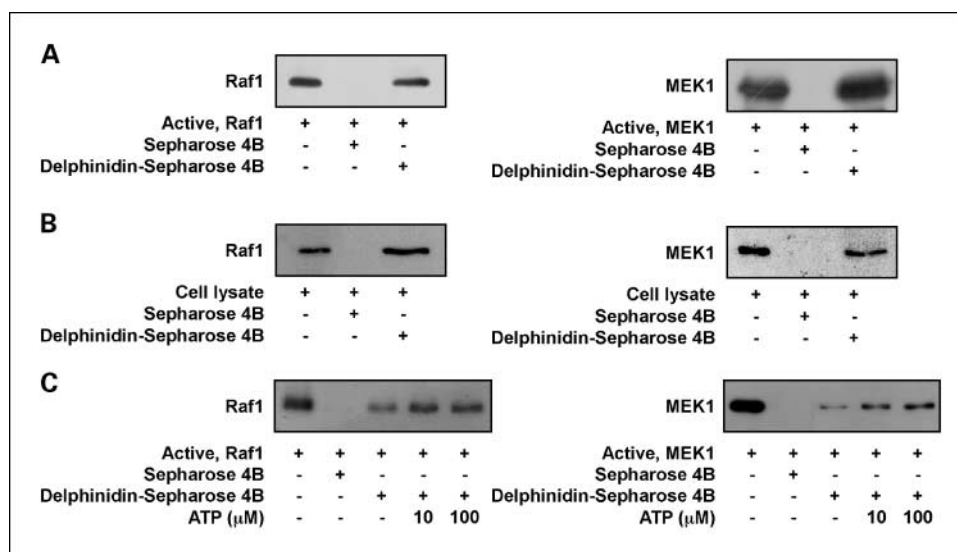
that the inhibition of the ERK pathways by delphinidin leads to the suppression of AP-1 and NF-κB activity, resulting in decreased neoplastic transformation.

**Delphinidin inhibits Raf1 and MEK1 activities more strongly compared with its suppression of ERK2 or JNK1 activities**

We investigated the effects of delphinidin on the kinase activities of Raf1 and MEK1, upstream kinases of ERK. Kinase assay data revealed that delphinidin strongly suppressed Raf1 and MEK1 activities *in vitro* (Fig. 4B, top right and top left). Delphinidin at 10 μmol/L blocked Raf1 and MEK1 activities by 67.2% and 64.3%, respectively, but either had no significant effect or only slightly inhibited ERK2 or JNK1



**Fig. 4.** The TPA-stimulated Raf/MEK/ERK/p90RSK/MSK signaling cascade is down-regulated by delphinidin through the direct inhibition of both Raf1 and MEK1 activities. *A*, delphinidin inhibits TPA-induced phosphorylation of MEK, ERK, p90RSK, and MSK in JB6 P+ cells. JB6 P+ cells were treated with delphinidin (0, 10, and 20 μmol/L) for 1 h before being exposed to TPA for an additional 15 min. The cells were lysed, and the levels of phosphorylated and total MEK, ERK, p90RSK, and MSK proteins were determined by Western blot analysis as described in Materials and Methods using specific antibodies against the respective phosphorylated and total proteins. Data are representative of three independent experiments that gave similar results. *B*, delphinidin inhibits Raf1 or MEK1 activities more than ERK2 or JNK1 activities *in vitro*. *In vitro* Raf1, MEK1, ERK2, and JNK1 kinase assays were done as described in Materials and Methods, and the kinase activity is expressed as the percent inhibition by delphinidin relative to the activity of untreated Raf1, MEK1, ERK2, or JNK1 control, respectively. *C*, delphinidin inhibits Raf1 and MEK1 activities *ex vivo*. For the *ex vivo* MEK1 and Raf1 kinase assays, cells were pretreated with delphinidin at the indicated concentrations (0, 10, 20, and 40 μmol/L) for 1 h before being exposed to TPA for 30 min. Cells were harvested, and immunoprecipitation and *ex vivo* Raf1 and MEK1 kinase assays were done. The kinase activity is expressed as the percent inhibition by delphinidin relative to cells exposed to TPA only. *Columns*, mean of the <sup>32</sup>P count from three separate experiments; *bars*, SD. For *in vitro* kinase assays, the asterisk (\*) indicates a significant decrease ( $P < 0.01$ ) in kinase activity between the groups treated with active Raf1 (or MEK1, ERK2, or JNK1) and delphinidin together and the group containing active Raf1 (or MEK1, ERK2, or JNK1) alone. For *ex vivo* kinase assays, the asterisk (\*) indicates a significant decrease ( $P < 0.01$ ) in kinase activity between groups treated with TPA and delphinidin together and the groups exposed to TPA alone. *D*, overexpression of Raf1 or MEK1 attenuates delphinidin inhibition of AP-1 activation. The AP-1 JB6 mouse epidermal cell line transfected with constitutively active Raf1 or MEK1 was pretreated with delphinidin for 24 h at the concentrations indicated. Luciferase activity is expressed as relative AP-1 activity (% of CA-Raf1 or MEK1 transfected control). *Columns*, mean of three independent experiments; *bars*, SD. \*, significant decrease ( $P < 0.01$ ) between the group treated with delphinidin and the group transfected with Raf1 (or MEK1) alone.



**Fig. 5.** Delphinidin specifically binds with Raf1 or MEK1 noncompetitively with ATP. *A*, binding of Raf1 or MEK1 with delphinidin *in vitro* was confirmed by immunoblotting using antibodies against Raf1 (left) or MEK1 (right). Lane 1 (input control), Raf1 and MEK1 protein standards; lane 2 (control), Sepharose 4B was used to pull down Raf1 or MEK1 as described in Materials and Methods; lane 3, delphinidin/Sepharose 4B affinity beads were used to pull down Raf1 or MEK1. *B*, binding of Raf1 or MEK1 with delphinidin *ex vivo* was confirmed by immunoblotting using an antibodies against Raf1 (left) or MEK1 (right). Lane 1 (input control), whole-cell lysates from JB6 P+ cells; lane 2 (control), a lysate of JB6 P+ cells precipitated with Sepharose 4B beads; lane 3, whole-cell lysates from JB6 P+ cells precipitated by delphinidin/Sepharose 4B affinity beads. *C*, delphinidin did not compete with ATP for binding with Raf1 or MEK1. Active Raf1 (100 ng) or MEK1 (2  $\mu$ g) was incubated with ATP at two concentrations (10 or 100  $\mu$ mol/L) and 100  $\mu$ L of delphinidin/Sepharose 4B or 100  $\mu$ L of Sepharose 4B (as a negative control) in a reaction buffer to a final volume of 500  $\mu$ L. The mixtures were incubated at 4°C overnight with shaking. After washing, the pulled-down proteins were detected by Western blotting. Lane 2, negative control, which indicates that Raf1 and MEK1 do not bind with Sepharose 4B; lane 3, positive control, which indicates that Raf1 and MEK1 bind with delphinidin/Sepharose 4B.

activities (Fig. 4B, bottom left and bottom right, respectively). Consistent with results from an *in vitro* kinase assay, an *ex vivo* kinase assay revealed that delphinidin inhibited TPA-induced Raf1 and MEK1 activities in JB6 P+ cells (Fig. 4C). Additionally, overexpression of Raf1 or MEK1 slightly attenuated delphinidin inhibition of TPA-induced AP-1 activation (Fig. 4D). These results indicated that Raf1 and MEK1 are important molecular targets of delphinidin for the inhibition of cell transformation.

#### Delphinidin directly binds with Raf1 or MEK1 noncompetitively with ATP

We determined whether delphinidin directly interacts with Raf1 or MEK1. In an *in vitro* pull-down assay, Raf1 and MEK1 were found in the delphinidin/Sepharose 4B beads but not in Sepharose 4B beads (Fig. 5A). We also found *ex vivo* binding between delphinidin and Raf1 or MEK1 in JB6 P+ cell lysates (Fig. 5B). Competition data revealed that ATP did not compete with delphinidin for binding with Raf1 or MEK1 (Fig. 5C). These results indicated that delphinidin interacts with Raf1 or MEK1 and results in down-regulation of their respective kinase activities noncompetitively with ATP.

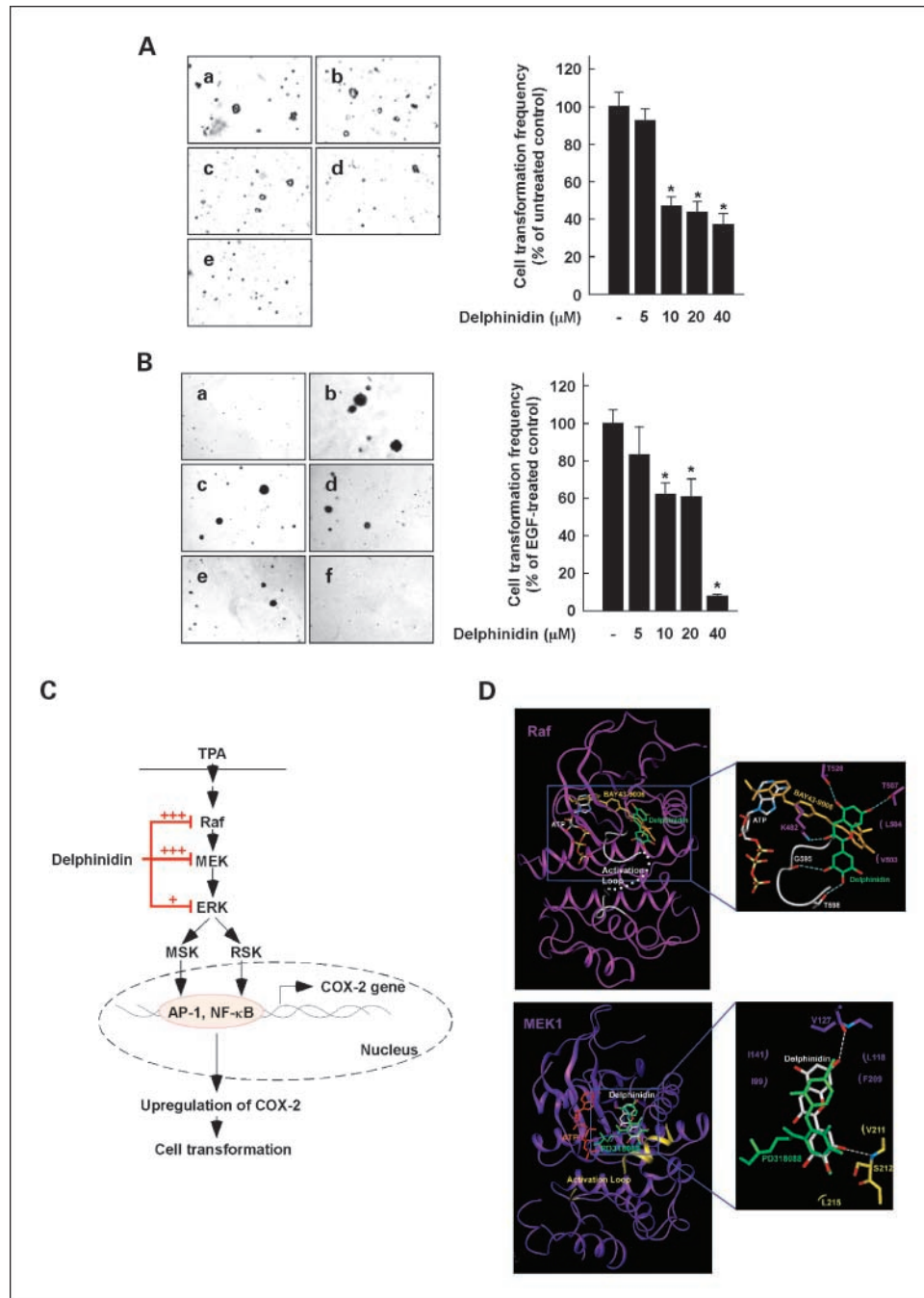
#### Delphinidin inhibits H-Ras-induced or EGF-induced neoplastic transformation of JB6 P+ cells

To confirm that inhibition of the Raf/MEK/ERK signaling pathway by delphinidin leads to the suppression of neoplastic transformation, we examined whether delphinidin could inhibit H-Ras-induced or EGF-induced JB6 P+ cell transformation. Results indicate that delphinidin at 10  $\mu$ mol/L blocked H-Ras-induced or EGF-induced cell transformations

by 53.7% or 40.3%, respectively (Fig. 6A and B). These findings further supported the evidence showing that delphinidin suppresses cell transformation mainly by targeting Raf1 or MEK1 (Fig. 6C).

#### Discussion

Epidemiologic investigations indicate that moderate consumption of anthocyanin-containing foodstuffs, such as red wine and bilberry extract, is associated with a lower risk of cancer (29, 30). A previous study showed that delphinidin exerted the strongest anticarcinogenic effects among six types of anthocyanidins, including delphinidin, cyanidin, petunidin, pelargonidin, peonidin, and malvidin (23), which is consistent with our finding that delphinidin suppressed TPA-induced neoplastic transformation. Evidence suggests that inflammation is associated with the transformation of normal cells into tumors (31). Overexpression of COX-2 was found to be a general feature of neoplasms, particularly those of epithelial origin, in both experimental animals and humans. Accumulating evidence suggests that high levels of COX-2 expression and PGE<sub>2</sub> production play a role in tumorigenesis, particularly in skin cancer (3, 4, 32). Previous studies also showed that COX-2 inhibitors suppress neoplastic transformation and that COX-2 overexpression induces neoplastic transformation (7, 33). Therefore, the suppression of prostaglandin synthesis by selectively inhibiting COX-2 was suggested as a promising strategy for developing chemopreventive agents. Our results showed that delphinidin suppresses TPA-induced COX-2 expression and PGE<sub>2</sub> production in JB6 P+ cells. These findings indicated that delphinidin exerts potent antitumor-promoting and anti-inflammatory effects.



**Fig. 6.** Effects of delphinidin on H-Ras–induced or EGF-induced cell transformations and the proposed molecular mechanisms for inhibition of neoplastic cell transformation by delphinidin. *A, left*, H-Ras–transformed JB6 cells were treated as described in Materials and Methods, and colonies were counted 14 d later. *a*, untreated control; *b*, 5 μmol/L delphinidin; *c*, 10 μmol/L delphinidin; *d*, 20 μmol/L delphinidin; *e*, 40 μmol/L delphinidin. *Right*, delphinidin inhibits H-Ras–induced cell transformation. Cell colonies were counted under a microscope with the aid of Image-Pro Plus software (version 4). The effects of delphinidin on cell transformation of JB6 P+ cells are presented as the percent inhibition of cell transformation in soft agar by delphinidin relative to untreated H-Ras–transformed cells. *Columns*, mean of three independent experiments; *bars*, SD. \*, significant difference ( $P < 0.01$ ) between groups treated with delphinidin and the untreated control group. *B, left*, delphinidin inhibits EGF-induced cell transformation. JB6 P+ cells were treated as described in Materials and Methods, and colonies were counted 14 d later. *a*, untreated control; *b*, EGF alone; *c*, EGF and 5 μmol/L delphinidin; *d*, EGF and 10 μmol/L delphinidin; *e*, EGF and 20 μmol/L delphinidin; *f*, EGF and 40 μmol/L delphinidin. *Right*, cell colonies were counted under a microscope with the aid of Image-Pro Plus software. The effects of delphinidin on cell transformation of JB6 P+ cells are presented as the percent inhibition of cell transformation in soft agar relative to cell stimulated by only EGF. *Columns*, mean of three independent experiments; *bars*, SD. \*, significant difference ( $P < 0.01$ ) between groups treated with EGF and delphinidin and the group treated with EGF alone. *C*, delphinidin inhibits TPA-induced neoplastic transformation by directly targeting Raf1 and MEK1 activities. +, greater inhibition of kinase activity. *D*, modeling study of the binding of delphinidin to Raf1 or MEK1. *Top*, hypothetical model of the B-Raf-ATP-delphinidin complex. Delphinidin (with green carbon atoms) binds to the pocket adjacent to the ATP (white carbon atoms)–binding site. BAY43-9006 (yellow) is overlaid on the model structure. The partially disordered activation loop is colored white. The residues involved in the interactions with delphinidin are indicated. The hydrogen bond is depicted as a dashed line and the hydrophobic interaction as a small curve. *Bottom*, hypothetical model of the MEK1-ATP-delphinidin complex. Delphinidin (atomic color) binds to the pocket adjacent to the ATP (orange)–binding site. PD318088 (green) is overlaid on the model structure of the complex for comparison. The partially disordered activation loop is colored yellow. The residues involved in the interactions with delphinidin are indicated.



The AP-1 and NF- $\kappa$ B signal transduction pathways are important in tumor progression, and both AP-1 and NF- $\kappa$ B are activated by tumor promoters (28, 34, 35). Recent studies showed that COX-2 expression is primarily regulated by AP-1, NF- $\kappa$ B, and their upstream kinases, MAPKs (13, 28, 34). The activated form of each MAPK phosphorylates and activates other kinases or transcription factors, thereby altering the expression of the target genes. The induction of neoplastic transformation and COX-2 expression was abolished by the pharmacologic inhibition or dominant-negative knockout of MEK, suggesting that the MEK pathway is partially responsible for cell transformation and COX-2 expression (9, 36). Therefore, inhibition of signal transduction involving MEK, AP-1, and NF- $\kappa$ B might be functionally linked to the antitumor promotion effects of delphinidin. The present study showed that delphinidin inhibits TPA-induced AP-1 and NF- $\kappa$ B transactivation and *c-fos* promoter activity in JB6 P+ cells. Further, we found that the MEK/ERK/p90RSK/MSK signaling cascade was blocked by delphinidin, suggesting that other upstream effectors serve as target(s) for delphinidin.

The Ras/Raf/MEK/ERK signaling pathway is responsible for the coordination and regulation of cell growth and differentiation in response to extracellular stimulation (37–40). The ERK group is considered the classic MAPK signaling pathway and consists of a MAPK (e.g., ERK1 and ERK2), a MEK (e.g., MEK1 and MEK2), and a MAPK kinase kinase (e.g., Raf or MKKK). MEK1 and MEK2 are dual specificity protein kinases that phosphorylate the downstream target ERK on specific tyrosine and threonine residues. MEKs function as key components of this evolutionarily conserved signaling module and are activated by the phosphorylation of key serine residues on the catalytic domain by the upstream serine kinase Raf. Constitutively activated MEK or Raf results in neoplastic transformation (41). Our results clearly showed that delphinidin was effective at inhibiting Raf1 and MEK1 activities *in vitro* and *ex vivo* and resulted in the suppression of ERK phosphorylation. *In vitro* and *ex vivo* pull-down assays revealed that delphinidin directly bound Raf1 and MEK1 noncompetitively with ATP, which might account for reduced kinase activities of Raf1 and MEK1. Delphinidin also suppressed H-Ras-induced and EGF-induced neoplastic transformation, supporting the idea that delphinidin inhibits the Raf/MEK/ERK pathway irrespective of the type of inducers stimulating this pathway. Collectively, these findings indicated that the inhibition of cell transformation and COX-2 expression by delphinidin was mainly caused by the suppression of Raf1 or MEK1 activities. In addition to the ERK pathway, JNK also was reported to be involved in neoplastic transformation and COX-2 overexpression in JB6 P+ cells (7, 34). We found that delphinidin inhibited TPA-induced JNK phosphorylation (data not shown) and slightly inhibited JNK1 activity.

Thus, delphinidin might have another potent molecular target, such as an upstream kinase of JNK.

Agents targeting multiple kinases might be more effective than highly selective kinase inhibitors administered as single agents. Based on the observations that delphinidin binds to both Raf1 and MEK1 in an ATP-noncompetitive manner, we modeled the binding structures of delphinidin to Raf1 and MEK1. Because the crystal structure of Raf1 is not available, a docking study was carried out using the crystal structure of B-Raf (80% homologous amino acid sequence with Raf1) in complex with BAY43-9006. In the hypothetical structure of the B-Raf/ATP/delphinidin ternary complex, delphinidin could be docked to the pocket separate from the ATP-binding site of B-Raf in contrast with BAY43-9006, which is an ATP-competitive inhibitor (Fig. 6D). Several hydrogen bonds and hydrophobic interactions are involved in the putative binding site of delphinidin. Especially, the C-ring moiety of delphinidin forms hydrogen bonds with the backbone carbonyl group of Gly<sup>595</sup> and the side chain of Thr<sup>598</sup> of the activation loop of Raf1 and thereby can stabilize the inactive conformation of the activation loop of B-Raf. Interestingly, delphinidin also could be docked to the pocket separate from but adjacent to the ATP-binding site of MEK1, which is similar to that observed for PD318088 in the crystal structure of the MEK1/PD318088 complex (Fig. 6D; ref. 42). Delphinidin can make several hydrogen bonds and hydrophobic interactions in the ATP-noncompetitive binding site of MEK1. Especially, the interactions by the C-ring moiety are critical for the holding of the activation loop of the inactive MEK1. The inactive conformation of the activation loop can be stabilized by the hydrophobic interactions of Val<sup>211</sup> and Leu<sup>215</sup> and the hydrogen bond of the backbone amide group of Ser<sup>212</sup> with the C-ring of delphinidin.

In summary, delphinidin inhibits tumor promoter-induced neoplastic transformation and COX-2 expression in JB6 P+ cells. This inhibition is mediated mainly by the blockage of the Raf/MEK/ERK pathway and subsequent suppression of AP-1 and NF- $\kappa$ B activities. Delphinidin binds with Raf1 and MEK1 and strongly inhibits their kinase activity. Collectively, these results suggested that Raf1 and MEK1 are the potent molecular targets that bind delphinidin for suppressing neoplastic transformation. These results provide insight into the biological actions of delphinidin and the molecular basis for the development of new chemoprotective agents.

## Disclosure of Potential Conflicts of Interest

No potential conflicts of interest were disclosed.

## Acknowledgments

We thank Dr. C.J. Marshall for mutant Raf1 plasmid.

## References

- Balkwill F, Mantovani A. Inflammation and cancer: back to Virchow. *Lancet* 2001;357:539–45.
- Coussens LM, Werb Z. Inflammation and cancer. *Nature* 2002;420:860–7.
- Higashi Y, Kanekura T, Kanzaki T. Enhanced expression of cyclooxygenase (COX)-2 in human skin epidermal cancer cells: evidence for growth suppression by inhibiting COX-2 expression. *Int J Cancer* 2000;86:667–71.
- Lee JL, Mukhtar H, Bickers DR, Kopelovich L, Athar M. Cyclooxygenases in the skin: pharmacological and toxicological implications. *Toxicol Appl Pharmacol* 2003;192:294–306.
- Williams CS, DuBois RN. Prostaglandin endoperoxide synthase: why two isoforms? *Am J Physiol* 1996;270:G393–400.
- Liu G, Bode A, Ma WY, Sang S, Ho CT, Dong Z. Two novel glycosides from the fruits of *Morinda citrifolia* (noni) inhibit AP-1 transactivation and cell transformation in the mouse epidermal JB6 cell line. *Cancer Res* 2001;61:5749–56.

7. Wong BC, Jiang XH, Lin MC, et al. Cyclooxygenase-2 inhibitor (SC-236) suppresses activator protein-1 through c-Jun NH<sub>2</sub>-terminal kinase. *Gastroenterology* 2004;126:136–47.
8. Dong Z, Birrer MJ, Watts RG, Matrisian LM, Colburn NH. Blocking of tumor promoter-induced AP-1 activity inhibits induced transformation in JB6 mouse epidermal cells. *Proc Natl Acad Sci U S A* 1994;91:609–13.
9. Huang C, Ma WY, Young MR, Colburn N, Dong Z. Shortage of mitogen-activated protein kinase is responsible for resistance to AP-1 transactivation and transformation in mouse JB6 cells. *Proc Natl Acad Sci U S A* 1998;95:156–61.
10. Young MR, Li JJ, Rincon M, et al. Transgenic mice demonstrate AP-1 (activator protein-1) transactivation is required for tumor promotion. *Proc Natl Acad Sci U S A* 1999;96:9827–32.
11. Sebolt-Leopold JS, Herrera R. Targeting the mitogen-activated protein kinase cascade to treat cancer. *Nat Rev Cancer* 2004;4:937–47.
12. Nomura M, Ichimatsu D, Moritani S, et al. Inhibition of epidermal growth factor-induced cell transformation and Akt activation by caffeine. *Mol Carcinog* 2005;44:67–76.
13. Suzukawa K, Weber TJ, Colburn NH. AP-1, NF- $\kappa$ B, and ERK activation thresholds for promotion of neoplastic transformation in the mouse epidermal JB6 model. *Environ Health Perspect* 2002;110:865–70.
14. Roberts PJ, Der CJ. Targeting the Raf-MEK-ERK mitogen-activated protein kinase cascade for the treatment of cancer. *Oncogene* 2007;26:3291–310.
15. Thompson N, Lyons J. Recent progress in targeting the Raf/MEK/ERK pathway with inhibitors in cancer drug discovery. *Curr Opin Pharmacol* 2005;5:350–6.
16. Schreck R, Rapp UR. Raf kinases: oncogenesis and drug discovery. *Int J Cancer* 2006;119:2261–71.
17. Gioeli D, Mandell JW, Petroni GR, Frierson HF, Jr., Weber MJ. Activation of mitogen-activated protein kinase associated with prostate cancer progression. *Cancer Res* 1999;59:279–84.
18. Oka H, Chatani Y, Hoshino R, et al. Constitutive activation of mitogen-activated protein (MAP) kinases in human renal cell carcinoma. *Cancer Res* 1995;55:4182–7.
19. Mazza G. Anthocyanins in grapes and grape products. *Crit Rev Food Sci Nutr* 1995;35:341–71.
20. Chen S, Ruan Q, Bedner E, et al. Effects of the flavonoid baicalin and its metabolite baicalein on androgen receptor expression, cell cycle progression and apoptosis of prostate cancer cell lines. *Cell Prolif* 2001;34:293–304.
21. Fotsis T, Pepper MS, Aktas E, et al. Flavonoids, dietary-derived inhibitors of cell proliferation and *in vitro* angiogenesis. *Cancer Res* 1997;57:2916–21.
22. Nagase H, Sasaki K, Kito H, Haga A, Sato T. Inhibitory effect of delphinidin from *Solanum melongena* on human fibrosarcoma HT-1080 invasiveness *in vitro*. *Planta Med* 1998;64:216–9.
23. Hou DX, Kai K, Li JJ, et al. Anthocyanidins inhibit activator protein 1 activity and cell transformation: structure-activity relationship and molecular mechanisms. *Carcinogenesis* 2004;25:29–36.
24. Subbaramaiah K, Bulic P, Lin Y, Dannenberg AJ, Pasco DS. Development and use of a gene promoter-based screen to identify novel inhibitors of cyclooxygenase-2 transcription. *J Biomol Screen* 2001;6:101–10.
25. Wang Y, Falasca M, Schlessinger J, et al. Activation of the c-fos serum response element by phosphatidylinositol 3-kinase and rho pathways in HeLa cells. *Cell Growth Differ* 1998;9:513–22.
26. Wang Y, Prywes R. Activation of the c-fos enhancer by the erk MAP kinase pathway through two sequence elements: the c-fos AP-1 and p62TCF sites. *Oncogene* 2000;19:1379–85.
27. Bode AM, Dong Z. Signal transduction pathways: targets for chemoprevention of skin cancer. *Lancet Oncol* 2000;1:181–8.
28. Bode AM, Dong Z. Signal transduction pathways in cancer development and as targets for cancer prevention. *Prog Nucleic Acid Res Mol Biol* 2005;79:237–97.
29. Muth ER, Laurent JM, Jasper P. The effect of bilberry nutritional supplementation on night visual acuity and contrast sensitivity. *Altern Med Rev* 2000;5:164–73.
30. Renaud S, de Lorgeril M. Wine, alcohol, platelets, and the French paradox for coronary heart disease. *Lancet* 1992;339:1523–6.
31. Dubois RN, Abramson SB, Crofford L, et al. Cyclooxygenase in biology and disease. *FASEB J* 1998;12:1063–73.
32. Prosperi JR, Mallery SR, Kigerl KA, Erfurt AA, Robertson FM. Invasive and angiogenic phenotype of MCF-7 human breast tumor cells expressing human cyclooxygenase-2. *Prostaglandins Other Lipid Mediat* 2004;73:249–64.
33. Liu G, Ma WY, Bode AM, Zhang Y, Dong Z. NS-398 and piroxicam suppress UVB-induced activator protein 1 activity by mechanisms independent of cyclooxygenase-2. *J Biol Chem* 2003;278:2124–30.
34. Hsu TC, Young MR, Cmarik J, Colburn NH. Activator protein 1 (AP-1)- and nuclear factor  $\kappa$ B (NF- $\kappa$ B)-dependent transcriptional events in carcinogenesis. *Free Radic Biol Med* 2000;28:1338–48.
35. Cowley S, Paterson H, Kemp P, Marshall CJ. Activation of MAP kinase kinase is necessary and sufficient for PC12 differentiation and for transformation of NIH 3T3 cells. *Cell* 1994;77:841–52.
36. Sebolt-Leopold JS, Dudley DT, Herrera R, et al. Blockade of the MAP kinase pathway suppresses growth of colon tumors *in vivo*. *Nat Med* 1999;5:810–6.
37. Johnson JI, Decker S, Zaharevitz D, et al. Relationships between drug activity in NCI preclinical *in vitro* and *in vivo* models and early clinical trials. *Br J Cancer* 2001;84:1424–31.
38. Voskoglou-Nomikos T, Pater JL, Seymour L. Clinical predictive value of the *in vitro* cell line, human xenograft, and mouse allograft preclinical cancer models. *Clin Cancer Res* 2003;9:4227–39.
39. Brugge JS, Erikson RL. Identification of a transformation-specific antigen induced by an avian sarcoma virus. *Nature* 1977;269:346–8.
40. Collett MS, Erikson RL. Protein kinase activity associated with the avian sarcoma virus src gene product. *Proc Natl Acad Sci U S A* 1978;75:2021–4.
41. Mansour SJ, Matten WT, Hermann AS, et al. Transformation of mammalian cells by constitutively active MAP kinase kinase. *Science* 1994;265:966–70.
42. Ohren JF, Chen H, Pavlovsky A, et al. Structures of human MAP kinase kinase 1 (MEK1) and MEK2 describe novel noncompetitive kinase inhibition. *Nat Struct Mol Biol* 2004;11:1192–7.

# Cancer Prevention Research

## Delphinidin Attenuates Neoplastic Transformation in JB6 Cl41 Mouse Epidermal Cells by Blocking Raf/Mitogen-Activated Protein Kinase Kinase/Extracellular Signal-Regulated Kinase Signaling

Nam Joo Kang, Ki Won Lee, Jung Yeon Kwon, et al.

*Cancer Prev Res* 2008;1:522-531.

**Updated version** Access the most recent version of this article at:  
<http://cancerpreventionresearch.aacrjournals.org/content/1/7/522>

**Cited articles** This article cites 42 articles, 12 of which you can access for free at:  
<http://cancerpreventionresearch.aacrjournals.org/content/1/7/522.full#ref-list-1>

**Citing articles** This article has been cited by 3 HighWire-hosted articles. Access the articles at:  
<http://cancerpreventionresearch.aacrjournals.org/content/1/7/522.full#related-urls>

**E-mail alerts** [Sign up to receive free email-alerts](#) related to this article or journal.

**Reprints and Subscriptions** To order reprints of this article or to subscribe to the journal, contact the AACR Publications Department at [pubs@aacr.org](mailto:pubs@aacr.org).

**Permissions** To request permission to re-use all or part of this article, use this link  
<http://cancerpreventionresearch.aacrjournals.org/content/1/7/522>.  
Click on "Request Permissions" which will take you to the Copyright Clearance Center's (CCC) Rightslink site.