

COMMENTARY

- 123** An Abstract Provides "seAFOod" for Thought
Andrea DeCensi and Andreas Gescher

RESEARCH ARTICLES

- 125** Role of Krüppel-like Factor 4-p21^{CIP1} Axis in Breast Cancer Stem-like Cell Inhibition by Benzyl Isothiocyanate
Su-Hyeong Kim and Shivendra V. Singh
- 135** Genistein Prevents Development of Spontaneous Ovarian Cancer and Inhibits Tumor Growth in Hen Model
Kazim Sahin, Engin Yenice, Birdal Bilir, Cemal Orhan, Mehmet Tuzcu, Nurhan Sahin, Ibrahim H. Ozercan, Nashwa Kabil, Bulent Ozpolat, and Omer Kucuk
- 147**  Sulforaphane Suppresses the Growth of Triple-negative Breast Cancer Stem-like Cells *In vitro* and *In vivo*
Nadia P. Castro, Maria C. Rangel, Anand S. Merchant, Gabriel MacKinnon, Frank Cuttitta, David S. Salomon, and Young S. Kim
- 159** Participation in Cervical Screening by Self-collection, Pap, or a Choice of Either in Brazil
Philip E. Castle, Vânia R.S. Silva, Marcia E.L. Consolaro, Nádia Kienen, Lorna Bittencourt, Sandra M. Pelloso, Edward E. Partridge, Amanda Pierz, Camila B. Dartibale, Nelson S. Uchimura, and Isabel C. Scarinci
- 171** Simultaneous Measurement of 92 Serum Protein Biomarkers for the Development of a Multiprotein Classifier for Ovarian Cancer Detection
Amy P.N. Skubitz, Kristin L.M. Boylan, Kate Geschwind, Qing Cao, Timothy K. Starr, Melissa A. Geller, Joseph Celestino, Robert C. Bast Jr., Karen H. Lu, and Joseph S. Koopmeiners

- 185** Alpha-Blockers As Colorectal Cancer Chemopreventive: Findings from a Case-Control Study, Human Cell Cultures, and *In Vivo* Preclinical Testing
Nobumi Suzuki, Ryota Niikura, Sozaburo Ihara, Yohko Hikiba, Hiroto Kinoshita, Naoko Higashishima, Yoku Hayakawa, Atsuo Yamada, Yoshihiro Hirata, Ryo Nakata, Makoto Okamoto, Munetaka Sano, Akifumi Kushiyama, Mari Ichinose, Susan L. Woods, Daniel Worthley, Yasuhiko Iwamoto, and Kazuhiko Koike

LETTERS TO THE EDITOR

- 195** *NF1* Alterations are Linked to Increased HER2 Expression in Breast Cancer—Letter
Donatella Gambini, Federica Natacci, Claudia Cesaretti, and Nicola Fusco
- 197** HER2 Expression in *NF1* Breast Cancer—Response
Xia Wang and Dhananjay Chitale

EXPRESSION OF CONCERN

- 199** Expression of Concern: A BET Bromodomain Inhibitor Suppresses Adiposity-Associated Malignant Transformation

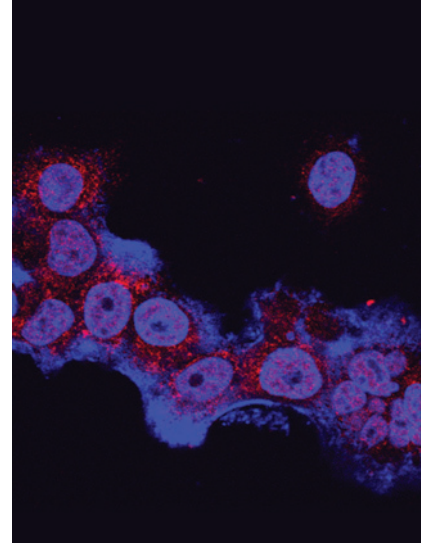
 AC icon indicates Author Choice

For more information please visit www.aacrjournals.org

Table of Contents

ABOUT THE COVER

Benzyl isothiocyanate (BITC), which is derived from cruciferous vegetables like garden cress, is a promising cancer chemopreventative phytochemical belonging to the isothiocyanate family with *in vivo* efficacy in chemically-induced as well as in transgenic rodent models of breast cancer. Cancer chemoprevention by BITC is associated with apoptosis induction in breast cancer cells and suppression of self-renewal of breast cancer stem-like cells (bCSC). This mechanistic study demonstrates a protective role for Krüppel-like factor 4 (KLF4)-p21^{CIP1} axis in bCSC inhibition by BITC. The micrograph image shows immunostaining for KLF4 (*red color*) in BITC-treated MCF-7 cells in which the nuclei are depicted in *blue*. Translational implication of the findings of this study is that breast cancer chemoprevention by BITC may be augmented with a combination regimen involving BITC and an inhibitor of KLF4.



Cancer Prevention Research

12 (3)

Cancer Prev Res 2019;12:123-200.

Updated version Access the most recent version of this article at:
<http://cancerpreventionresearch.aacrjournals.org/content/12/3>

E-mail alerts [Sign up to receive free email-alerts](#) related to this article or journal.

Reprints and Subscriptions To order reprints of this article or to subscribe to the journal, contact the AACR Publications Department at pubs@aacr.org.

Permissions To request permission to re-use all or part of this article, use this link <http://cancerpreventionresearch.aacrjournals.org/content/12/3>. Click on "Request Permissions" which will take you to the Copyright Clearance Center's (CCC) Rightslink site.