

RESEARCH ARTICLES

- | | | | |
|-----|---|-----|---|
| 875 | <p>Plasma Adiponectin and Soluble Leptin Receptor and Risk of Colorectal Cancer: A Prospective Study
Mingyang Song, Xuehong Zhang, Kana Wu, Shuji Ogino, Charles S. Fuchs, Edward L. Giovannucci, and Andrew T. Chan</p> | 938 | <p>An Evaluation of Novel, Lower-Cost Molecular Screening Tests for Human Papillomavirus in Rural China
Fang-Hui Zhao, Jose Jeronimo, You-Lin Qiao, Johannes Schweizer, Wen Chen, Melissa Valdez, Peter Lu, Xun Zhang, Le-Ni Kang, Pooja Bansil, Prama Paul, Charles Mahoney, Marthe Berard-Bergery, Ping Bai, Roger Peck, Jing Li, Feng Chen, Mark H. Stoler, and Philip E. Castle</p> |
| 886 | <p>Dietary Polyphenols Suppress Elevated Levels of Proinflammatory Mediators and Aromatase in the Mammary Gland of Obese Mice
Kotha Subbaramaiah, Erika Sue, Priya Bhardwaj, Baoheng Du, Clifford A. Hudis, Dilip Giri, Levy Kopelovich, Xi Kathy Zhou, and Andrew J. Dannenberg</p> | 949 | <p>Cheliensisin A Inhibits EGF-Induced Cell Transformation with Stabilization of p53 Protein Via a Hydrogen Peroxide/Chk1-Dependent Axis
Jingjie Zhang, Guangxun Gao, Liang Chen, Xu Deng, Jingxia Li, Yonghui Yu, Dongyun Zhang, Fei Li, Min Zhang, Qinshi Zhao, and Chuanshu Huang</p> |
| 898 | <p>Ultrasensitive Detection of Unknown Colon Cancer-Initiating Mutations Using the Example of the Adenomatous Polyposis Coli Gene
Christian Gerecke, Conny Mascher, Uwe Gottschalk, Burkhard Kleuser, and Bettina Scholtka</p> | 959 | <p>Oral Administration of a Gemini Vitamin D Analog, a Synthetic Triterpenoid and the Combination Prevents Mammary Tumorigenesis Driven by ErbB2 Overexpression
Jae Young So, Joseph E. Wahler, Taesook Yoon, Amanda K. Smolarek, Yong Lin, Weichung Joe Shih, Hubert Maehr, Milan Uskokovic, Karen T. Liby, Michael B. Sporn, and Nanjoo Suh</p> |
| 908 | <p>Chemoprevention of Colon and Small Intestinal Tumorigenesis in APC^{min/+} Mice By SHetA2 (NSC721689) without Toxicity
Doris Mangiaracina Benbrook, Suresh Guruswamy, Yuhong Wang, Zhongjie Sun, Altaf Mohammed, Yuting Zhang, Qian Li, and Chinthalapally V. Rao</p> | 971 | <p>A Randomized Pilot Trial of Dietary Modification for the Chemoprevention of Noninvasive Bladder Cancer: The Dietary Intervention in Bladder Cancer Study
J. Kellogg Parsons, John P. Pierce, Loki Natarajan, Vicky A. Newman, Leslie Barbier, James Mohler, Cheryl L. Rock, Dennis D. Heath, Khurshid Guru, Michael B. Jameson, Hongying Li, Hossein Mirheydar, Michael A. Holmes, and James Marshall</p> |
| 917 | <p>Examining the Association between Oral Health and Oral HPV Infection
Thanh Cong Bui, Christine M. Markham, Michael Wallis Ross, and Patricia Dolan Mullen</p> | 979 | <p>Proteomic Changes Induced by Effective Chemopreventive Ratios of n-3:n-6 Fatty Acids and Tamoxifen against MNU-Induced Mammary Cancer in the Rat
Christine G. Skibinski, Henry J. Thompson, Arunangshu Das, Andrea Manni, James D. Bortner, Anne Stanley, Bruce A. Stanley, and Karam El-Bayoumy</p> |
| 925 | <p>Modulation of Circulating Angiogenic Factors and Tumor Biology by Aerobic Training in Breast Cancer Patients Receiving Neoadjuvant Chemotherapy
Lee W. Jones, Diane R. Fels, Miranda West, Jason D. Allen, Gloria Broadwater, William T. Barry, Lee G. Wilke, Elisabeth Masko, Pamela S. Douglas, Rajesh C. Dash, Thomas J. Povsic, Jeffrey Peppercorn, P. Kelly Marcom, Kimberly L. Blackwell, Gretchen Kimmick, Timothy G. Turkington, and Mark W. Dewhirst</p> | | |

Cultivated Sea Lettuce is a Multiorgan Protector from Oxidative and Inflammatory Stress by Enhancing the Endogenous Antioxidant Defense System

Ranjala Ratnayake, Yanxia Liu, Valerie J. Paul, and Hendrik Luesch

Oral Naftopidil Suppresses Human Renal-Cell Carcinoma by Inducing G₁ Cell-Cycle Arrest in Tumor and Vascular Endothelial Cells

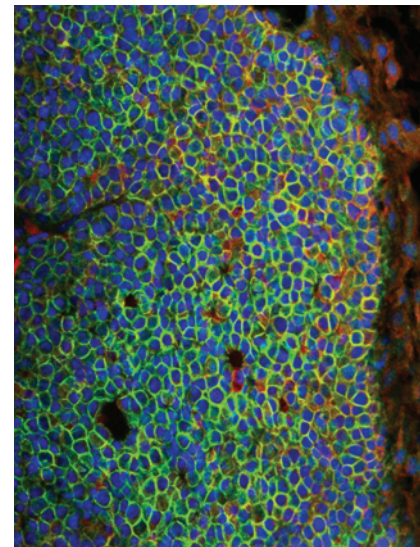
Yoichi Iwamoto, Kenichiro Ishii, Takeshi Sasaki, Manabu Kato, Hideki Kanda, Yasushi Yamada, Kiminobu Arima, Taizo Shiraishi, and Yoshiki Sugimura

AC icon indicates Author Choice

For more information please visit www.aacrjournals.org

ABOUT THE COVER

Human epidermal growth factor receptor 2 (HER2 or ErbB2), an ErbB receptor tyrosine kinase, is overexpressed in approximately 20% of cases of human breast cancer, and the ErbB2 signaling pathway is a critical therapeutic target for ErbB2-overexpressing breast cancer. The inhibitory effects of the Gemini vitamin D analogue BXL0124, the synthetic triterpenoid CDDO-Im, and the combination on tumorigenesis in MMTV-ErbB2/neu transgenic mice were investigated. All three treatments repressed the activation of ErbB2, which was prominent at the leading edge of mammary tumors and delayed the development of these tumors without significant toxicity. The cover micrograph (400×) depicts the merged images of activated ErbB2 (pErbB2, shown as green), total ErbB2 (red), and nuclei (blue) in untreated MMTV-ErbB2/neu transgenic mice. Therapeutic efficacy was investigated using the combination of BXL0124 and CDDO-Im. Short-term treatment with the combination did not show effects on tumor growth or the ErbB2 signaling pathway. The present study demonstrates that BXL0124, CDDO-Im, and the combination are potential agents for prevention, but not treatment, of the tumorigenesis of ErbB2-overexpressing breast cancer. See article by So and colleagues (beginning on page 959) for more information.



Cancer Prevention Research

6 (9)

Cancer Prev Res 2013;6:875-1006.

Updated version Access the most recent version of this article at:
<http://cancerpreventionresearch.aacrjournals.org/content/6/9>

E-mail alerts [Sign up to receive free email-alerts](#) related to this article or journal.

Reprints and Subscriptions To order reprints of this article or to subscribe to the journal, contact the AACR Publications Department at pubs@aacr.org.

Permissions To request permission to re-use all or part of this article, use this link <http://cancerpreventionresearch.aacrjournals.org/content/6/9>. Click on "Request Permissions" which will take you to the Copyright Clearance Center's (CCC) Rightslink site.