

COMMENTARIES

- 773** Overestimating the Role of Environment in Cancers
Robert Noble, Oliver Kaltz, Leonard Nunney, and Michael E. Hochberg
- 777** Deciphering the Effect of Metformin on Prostate Cancer Risk by Ethnicity
Edward Uchio, Frank L. Meyskens, and Ping H. Wang
See related article, p. 779

RESEARCH ARTICLES

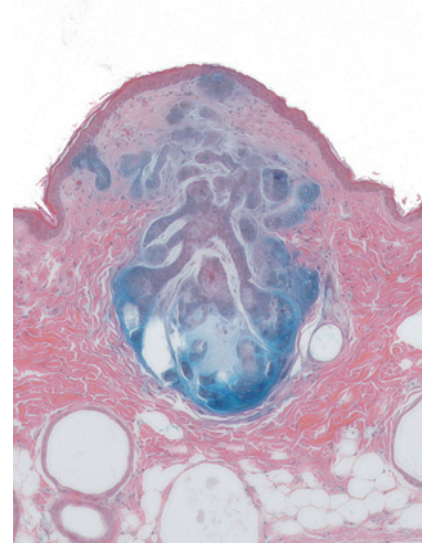
- 779** Metformin for Reducing Racial/Ethnic Difference in Prostate Cancer Incidence for Men with Type II Diabetes
Chen-Pin Wang, Donna M. Lehman, Yui-Wing F. Lam, John G. Kuhn, Devalingam Mahalingam, Steven Weitman, Carlos Lorenzo, John R. Downs, Elizabeth A. Stuart, Javier Hernandez, Ian M. Thompson, and Amelie G. Ramirez
See related article, p. 777
- 788** Harnessing the Power of Cruciferous Vegetables: Developing a Biomarker for *Brassica* Vegetable Consumption Using Urinary 3,3'-Diindolylmethane
Naomi Fujioka, Benjamin W. Ransom, Steven G. Carmella, Pramod Upadhyaya, Bruce R. Lindgren, Astia Roper-Batker, Dorothy K. Hatsukami, Vincent A. Fritz, Charles Rohwer, and Stephen S. Hecht

- 794** AKT1 Activation is Obligatory for Spontaneous BCC Tumor Growth in a Murine Model that Mimics Some Features of Basal Cell Nevus Syndrome
Arianna L. Kim, Jung Ho Back, Yucui Zhu, Xiuwei Tang, Nathan P. Yardley, Katherine J. Kim, Mohammad Athar, and David R. Bickers
- 803** American Ginseng Attenuates Colitis-Associated Colon Carcinogenesis in Mice: Impact on Gut Microbiota and Metabolomics
Chong-Zhi Wang, Chunhao Yu, Xiao-Dong Wen, Lina Chen, Chun-Feng Zhang, Tyler Calway, Yunping Qiu, Yunwei Wang, Zhiyu Zhang, Samantha Anderson, Yitao Wang, Wei Jia, and Chun-Su Yuan
- 812** Dietary Methyl Donor Depletion Suppresses Intestinal Adenoma Development
Matthew P. Hanley, Krishna Kadaveru, Christine Perret, Charles Giardina, and Daniel W. Rosenberg

Table of Contents

ABOUT THE COVER

On the cover, a digitized image of a hematoxylin and eosin-stained skin tissue section shows multiple basal cell carcinomas (BCCs), as detected by β -gal staining in hairless SKH1-*Ptch1*^{+/-} mice, a murine model that exhibits the spontaneous and accelerated growth pattern of BCCs, mimicking that of patients with basal cell nevus syndrome (BCNS). Intrinsic *Akt1* activation in *Ptch1*^{+/-} keratinocytes drives spontaneous and ultraviolet (UV)-induced BCC tumor growth in these mice. See article by Kim and colleagues (beginning on page 794) for more information.



Cancer Prevention Research

9 (10)

Cancer Prev Res 2016;9:773-820.

Updated version Access the most recent version of this article at:
<http://cancerpreventionresearch.aacrjournals.org/content/9/10>

E-mail alerts [Sign up to receive free email-alerts](#) related to this article or journal.

Reprints and Subscriptions To order reprints of this article or to subscribe to the journal, contact the AACR Publications Department at pubs@aacr.org.

Permissions To request permission to re-use all or part of this article, use this link <http://cancerpreventionresearch.aacrjournals.org/content/9/10>. Click on "Request Permissions" which will take you to the Copyright Clearance Center's (CCC) Rightslink site.