

## COMMENTARY

- 335** Limitations of the Driver/Passenger Model in Cancer Prevention  
Mary K. Kuhner, Rumen Kostadinov, and Brian J. Reid

## RESEARCH ARTICLES

- 339** Obesity-Associated Alterations in Inflammation, Epigenetics, and Mammary Tumor Growth Persist in Formerly Obese Mice



Emily L. Rossi, Rebecca E. de Angel, Laura W. Bowers, Subreen A. Khatib, Laura A. Smith, Eric Van Buren, Priya Bhardwaj, Dilip Giri, Marcos R. Estecio, Melissa A. Troester, Brionna Y. Hair, Erin L. Kirk, Ting Gong, Jianjun Shen, Andrew J. Dannenberg, and Stephen D. Hursting

- 349** A Randomized, Placebo-Controlled, Phase II, Presurgical Biomarker Trial of Celecoxib Versus Exemestane in Postmenopausal Breast Cancer Patients

Valentina Aristarco, Davide Serrano, Sara Gandini, Harriet Johansson, Debora Macis, Aliana Guerrieri-Gonzaga, Matteo Lazzeroni, Irene Feroce, Giancarlo Pruneri, Gianmatteo Pagani, Antonio Toesca, Pietro Caldarella, Andrea DeCensi, and Bernardo Bonanni

- 357** Cervical Microbiota Associated with Higher Grade Cervical Intraepithelial Neoplasia in Women Infected with High-Risk Human Papillomaviruses

Chandrika J. Piyathilake, Nicholas J. Ollberding, Ranjit Kumar, Maurizio Macaluso, Ronald D. Alvarez, and Casey D. Morrow

- 367** Mammary Adipose Tissue-Derived Lysophospholipids Promote Estrogen Receptor-Negative Mammary Epithelial Cell Proliferation

Paul A. Volden, Maxwell N. Skor, Marianna B. Johnson, Puneet Singh, Feenalie N. Patel, Martha K. McClintock, Matthew J. Brady, and Suzanne D. Conzen

- 379** The Effect of Atorvastatin on Breast Cancer Biomarkers in High-Risk Women  
YongLi Ji, Tiffany Rounds, Abigail Crocker, Betsy Sussman, Russell C. Hovey, Fonda Kingsley, Hyman B. Muss, Judy E. Garber, and Marie E. Wood

- 385** Effects of Pubertal Exposure to Dietary Soy on Estrogen Receptor Activity in the Breast of Cynomolgus Macaques

Fitriya N. Dewi, Charles E. Wood, Cynthia J. Willson, Thomas C. Register, Cynthia J. Lees, Timothy D. Howard, Zhiqing Huang, Susan K. Murphy, Janet A. Tooze, Jeff W. Chou, Lance D. Miller, and J. Mark Cline

- 396** Clinical Trial of 2-Phenethyl Isothiocyanate as an Inhibitor of Metabolic Activation of a Tobacco-Specific Lung Carcinogen in Cigarette Smokers

Jian-Min Yuan, Irina Stepanov, Sharon E. Murphy, Renwei Wang, Sharon Allen, Joni Jensen, Lori Strayer, Jennifer Adams-Haduch, Pramod Upadhyaya, Chap Le, Mindy S. Kurzer, Heather H. Nelson, Mimi C. Yu, Dorothy Hatsukami, and Stephen S. Hecht

- 406** Inflammation-Related IL1 $\beta$ /IL1R Signaling Promotes the Development of Asbestos-Induced Malignant Mesothelioma

Yuwaraj Kadariya, Craig W. Menges, Jacqueline Talarchek, Kathy Q. Cai, Andres J. Klein-Szanto, Ralph A. Pietrofesa, Melpo Christofidou-Solomidou, Mitchell Cheung, Brooke T. Mossman, Arti Shukla, and Joseph R. Testa

## LETTERS TO THE EDITOR

- 415** Role of *SFRP1* in NPC Metastasis—Letter  
Soodabeh ShahidSales, Seyed Mahdi Hassanian, Raheleh Mahdavian Zadeh, Majid Ghayour-Mobarhan, Sharareh Gholamin, Gordon A. Ferns, and Amir Avan

- 416** Role of *SFRP1* in NPC Metastasis—Response  
Jun Ma, Xian Yue Ren, and Na Liu

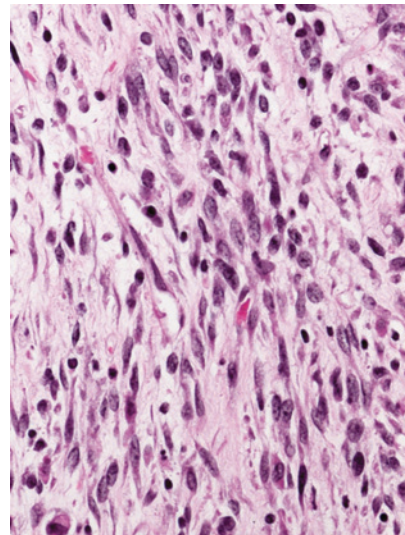
AC icon indicates Author Choice

For more information please visit [www.aacrjournals.org](http://www.aacrjournals.org)

# Table of Contents

## ABOUT THE COVER

The cover image shows H&E staining of a sarcomatoid malignant mesothelioma that formed in the peritoneum of an asbestos-exposed *Asc*<sup>+/-</sup> mouse. *Asc*-deficient mice have an impaired immune response to asbestos fibers due to the presence of a defective NALP3/NLRP3 inflammasome, which prevents the release of mature IL1 $\beta$ . For more information, see the article (beginning on p. 406) by Kadariya and colleagues.



# Cancer Prevention Research

**9 (5)**

*Cancer Prev Res* 2016;9:335-416.

**Updated version** Access the most recent version of this article at:  
<http://cancerpreventionresearch.aacrjournals.org/content/9/5>

**E-mail alerts** [Sign up to receive free email-alerts](#) related to this article or journal.

**Reprints and Subscriptions** To order reprints of this article or to subscribe to the journal, contact the AACR Publications Department at [pubs@aacr.org](mailto:pubs@aacr.org).

**Permissions** To request permission to re-use all or part of this article, use this link <http://cancerpreventionresearch.aacrjournals.org/content/9/5>. Click on "Request Permissions" which will take you to the Copyright Clearance Center's (CCC) Rightslink site.